



## North Mississippi Fish

### Hatchery



# Alligator Gar

*(Atractosteus spatula)*

The North Mississippi Fish Hatchery (NMFH) is managed by the Mississippi Department of Wildlife, Fisheries, and Parks' Fisheries Bureau.

The Private John Allen Hatchery in Tupelo, MS is managed by the US Fish and Wildlife Service. These two hatcheries partner in raising Alligator gar.

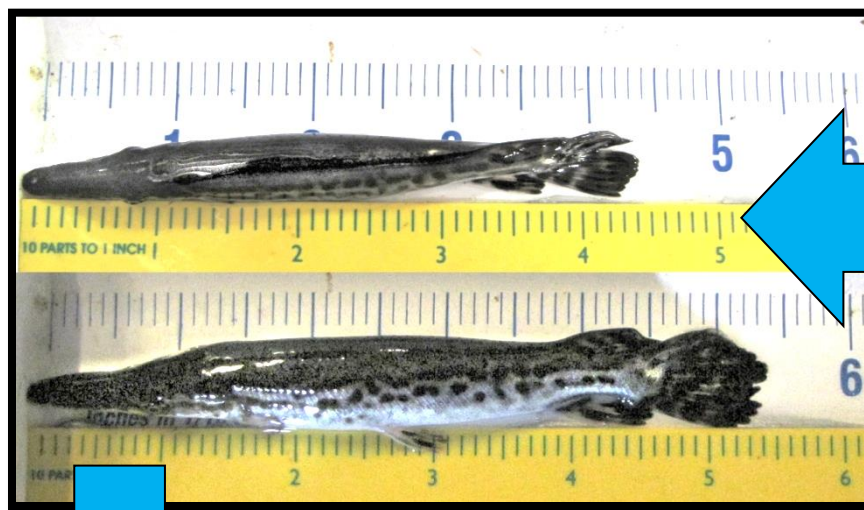
Adult fish are spawned at the Private John Allen Hatchery. The fry (newly hatched fish) are then transported to the NMFH and raised to an "advanced fingerling" size, which is between 8 and 12 inches long. This provides a better chance of survival in the wild.

Stocking is used to maintain or restore declining alligator gar populations.

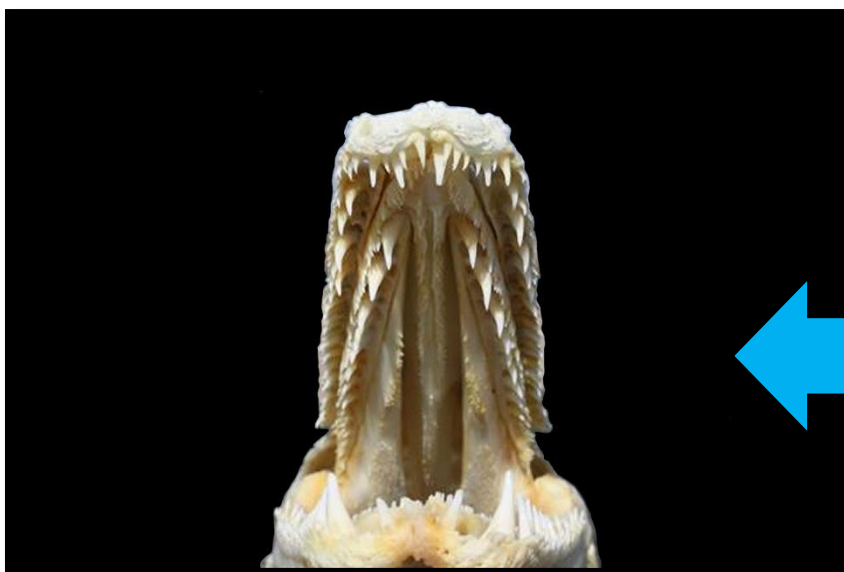
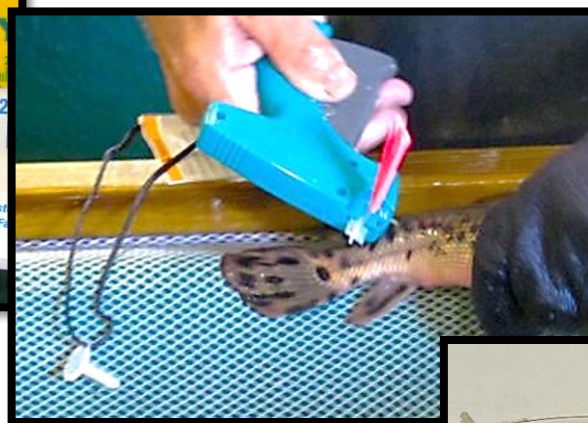
### Did you know?

Young alligator gar grow about an **inch a week!**

These fish can reach lengths of 9 feet and weigh over 300 pounds!



Fisheries biologists tag alligator gar before releasing them into the wild. Each tag is numbered. If the fish are re-captured, the tag allows biologists to track development and movement of fish after leaving the hatchery.



Alligator Gar have two rows of large teeth on the upper jaw.

Other gar species have one row.