

# DMAP Reports - Tallahala WMA - 2019

NRIS ID 7009 DMAP ID 9408

BIOLOGIST joshm COUNTY

ACRES 28000 YEARS ON DMAP 28 SOIL REGION Black Prairie

## Introductory Comments

### Harvest Summary

	Recommended Harvest	Number Harvested	Acres/Deer Harvested	% Data Collected
Bucks	0 - 0	36	777	94
Does	0 - 0	9	3111	100
Totals		45	622	95

### Comments

### Harvest History

	Region Avg	2019	2018	2017	2016	2015	2014	2013	2012	2011	2010	2009	2008
Acres	4417 28000	28000	28000	28000	28000	28000	28000	28000	28000	28000	28000	28000	28000
Total Deer	24.1 108	45	30	37	60	42	61	63	118	159	120	149	98
Bucks	9.1 63	36	27	28	31	23	27	37	48	75	50	82	48
Does	14.9 45	9	3	9	29	19	34	26	70	84	70	67	50
Acres/Deer	183 258	622	933	756	466	666	459	444	237	176	233	187	285
Bucks	482 443	777	1037	1000	903	1217	1037	756	583	373	560	341	583
Does	295 617	3111	9333	3111	965	1473	823	1076	400	333	400	417	560

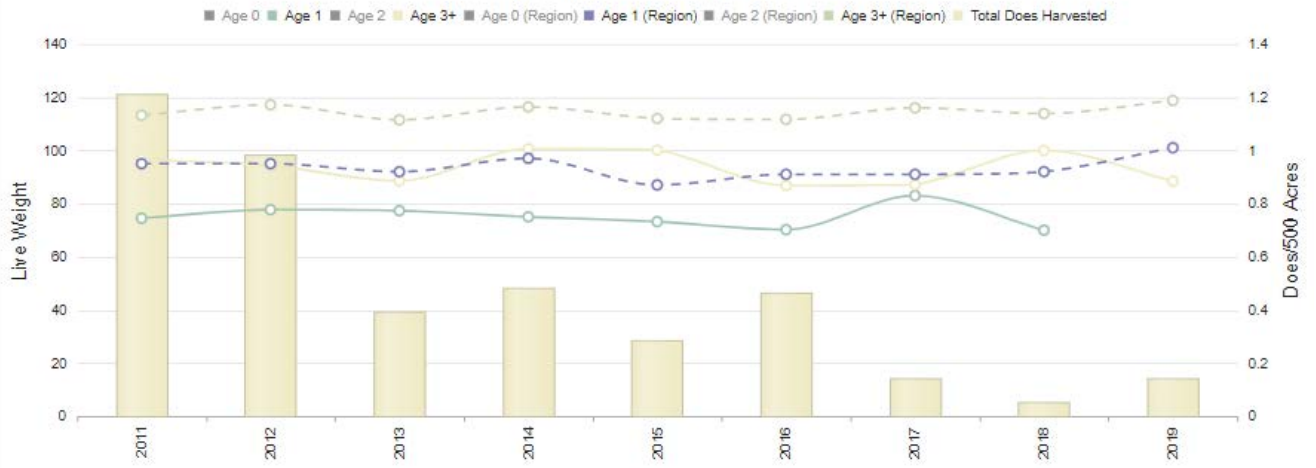
### Comments

### Doe Harvest History

	Region Avg	2019	2018	2017	2016	2015	2014	2013	2012	2011	2010	2009	2008	2007	2006
Does	14.9 45	9	3	9	29	19	34	26	70	84	70	67	50	56	34
Acres/Doe	328.6 1168	3111	9333	3111	965	1473	823	1076	400	333	400	417	560	500	823
% .5 Does	7.0 10	11	N/A	N/A	6	15	11	15	18	8	5	13	8	5	N/A
# .5 Does	1.0 5	1	0	0	2	3	4	4	13	7	4	9	4	3	0
Avg Weight	63.2 53	48	N/A	N/A	62	55	61	60	61	50	50	61	56	65	N/A
% 1.5 Does	13.8 19	N/A	33	11	17	26	8	23	18	14	15	19	24	14	17
# 1.5 Does	2.4 8	0	1	1	5	5	3	6	13	12	11	13	12	8	6
Avg Weight	92.4 79	N/A	70	83	70	73	75	77	77	74	80	80	84	89	76
% 2.5 Does	24.2 21	44	33	11	20	10	20	23	20	20	22	31	20	17	17
# 2.5 Does	3.5 9	4	1	1	6	2	7	6	14	17	16	21	10	10	6
Avg Weight	103.0 89	81	84	84	75	86	85	94	86	91	94	97	100	97	92
% 3.5+ Does	46.8 47	44	33	66	51	47	50	38	40	46	55	35	48	55	64
# 3.5+ Does	6.7 22	4	1	6	15	9	17	10	28	39	39	24	24	31	22
Avg Weight	111.8 96	88	100	86	86	99	100	86	93	96	102	100	106	102	94
% Lactation	N/A														
1.5	8.0 14	N/A	0	0	20	0	0	0	0	0	0	7	8	0	33
2.5	56.4 44	75	0	0	33	0	14	0	35	41	31	38	20	60	50
2.5+	61.4 46	37	0	42	33	9	16	6	33	50	36	31	38	51	50
3.5+	64.0 50	0	0	50	33	11	17	10	32	53	38	25	45	48	50

### Comments

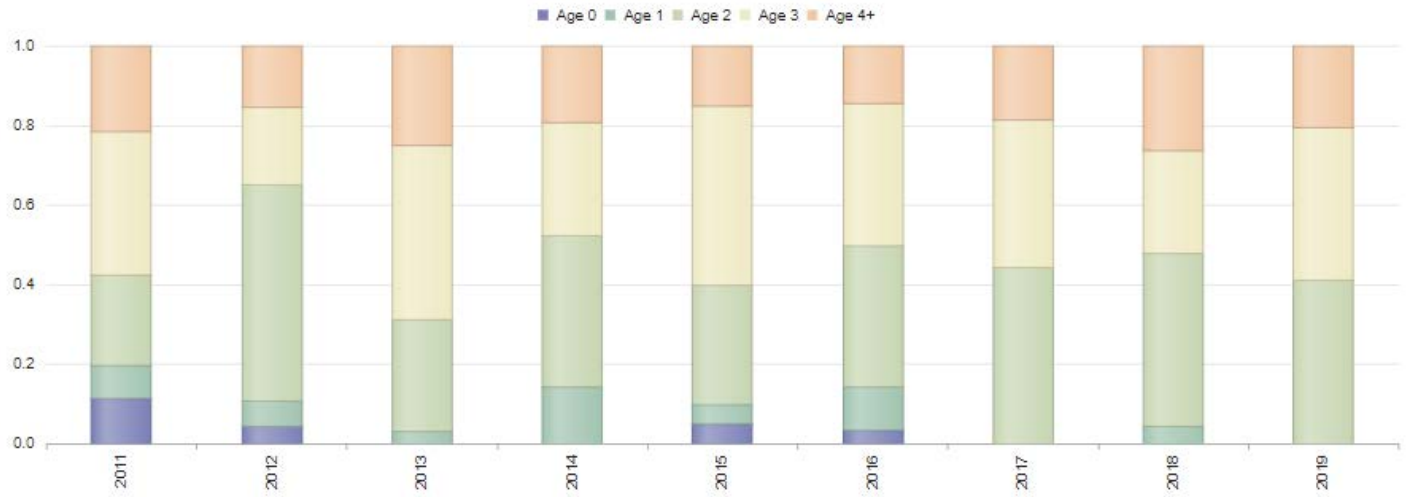
Click series in legend to toggle visibility.



Buck Harvest History

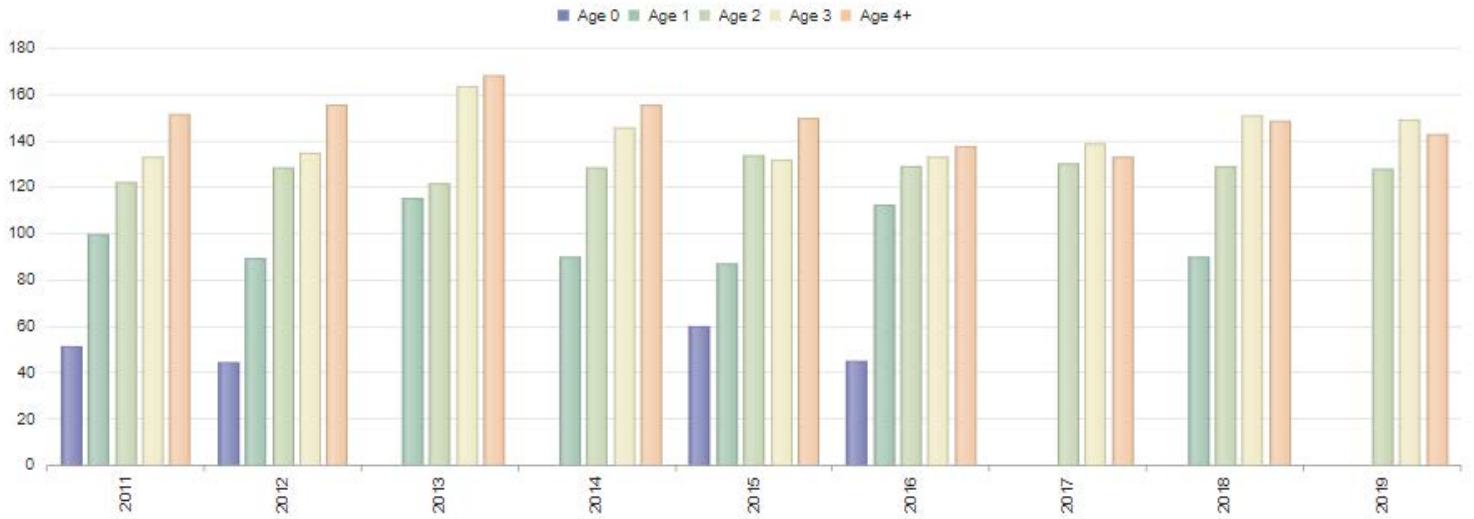
	Region	Avg	2019	2018	2017	2016	2015	2014	2013	2012	2011	2010	2009	2008	2007	2006	2005
Bucks	9.2	63	36	27	28	31	23	27	37	48	75	50	82	48	81	31	
Acres/Buck	487.8	587	777	1037	1000	903	1217	1037	756	583	373	560	341	583	345	903	1
% .5 Bucks	3.0	4	N/A	N/A	N/A	3	4	N/A	N/A	4	9	N/A	1	4	2	N/A	
# .5 Bucks	0.3	4	0	0	0	1	1	0	0	2	7	0	1	2	2	0	
Avg Weight	59.6	55	N/A	N/A	N/A	45	60	N/A	N/A	44	51	N/A	50	99	72	N/A	
% 1.5 Bucks	7.6	19	N/A	3	N/A	9	4	11	2	6	6	6	15	8	3	6	
# 1.5 Bucks	0.7	16	0	1	0	3	1	3	1	3	5	3	13	4	3	2	
% Spikes	65.0	59	N/A	100	N/A	33	100	100	100	100	100	33	92	50	100	100	
Avg Weight	106.6	99	N/A	90	N/A	112	87	90	115	89	99	98	99	107	101	84	
Avg Points	2.7	2	N/A	2.0	N/A	3.0	2.0	0.7	2.0	2.0	1.2	3.7	2.2	2.8	2.0	2.0	
Avg Base	1.5	1	N/A	1.6	N/A	1.8	0.5	0.0	2.5	1.1	0.9	2.1	1.5	2.4	1.6	0.8	
Avg Length	4.5	5	N/A	3.8	N/A	5.9	4.0	1.2	3.0	3.5	2.5	8.4	3.0	8.4	3.3	0.0	
Avg Spread	4.4	4	N/A	3.8	N/A	2.0	6.0	0.0	5.0	1.0	2.2	5.5	3.4	7.1	4.2	0.0	
% 2.5 Bucks	20.4	32	38	37	42	32	26	29	24	52	18	36	37	29	14	22	
# 2.5 Bucks	2.1	20	14	10	12	10	6	8	9	25	14	18	31	14	12	7	
Avg Weight	126.6	127	127	129	130	129	133	128	121	128	121	130	137	136	131	126	
Avg Points	6.1	6	6.9	7.1	6.9	7.4	5.0	6.3	7.1	7.1	7.4	7.4	7.2	6.7	6.4	4.9	
Avg Base	3.1	3	3.4	3.3	2.4	3.4	3.9	3.7	3.4	3.5	3.6	3.6	3.6	3.2	3.0	2.7	
Avg Length	12.4	13	15.0	15.3	13.1	14.9	15.1	14.5	15.2	14.8	14.2	15.0	14.7	14.0	12.6	11.5	
Avg Spread	9.8	10	11.9	11.9	12.0	11.0	11.5	11.8	11.5	11.3	10.9	12.1	12.0	11.9	11.0	9.6	
% 3.5 Bucks	27.2	25	36	22	35	32	39	22	37	18	29	44	25	37	28	48	
# 3.5 Bucks	2.6	14	13	6	10	10	9	6	14	9	22	22	21	18	23	15	
Avg Weight	160.4	144	148	150	138	133	131	145	163	134	132	139	149	144	133	143	
Avg Points	7.9	7	8.1	8.3	7.3	7.8	7.4	8.5	8.4	7.9	7.5	7.5	7.5	7.7	7.0	7.5	
Avg Base	3.8	3	4.1	3.8	4.3	3.9	3.9	4.5	4.5	3.5	4.0	3.9	4.0	3.6	3.5	3.5	
Avg Length	16.7	15	17.6	17.6	10.4	17.0	16.2	17.0	17.1	16.6	15.1	16.4	16.2	15.8	14.8	15.9	
Avg Spread	13.5	12	13.8	15.2	9.6	13.0	13.9	13.8	14.1	13.0	12.0	12.9	12.5	12.9	12.1	12.8	
% 4.5+ Bucks	35.4	13	19	22	17	12	13	14	21	14	17	14	15	20	46	22	
# 4.5+ Bucks	3.0	8	7	6	5	4	3	4	8	7	13	7	13	10	38	7	
Avg Weight	176.4	155	142	152	132	137	149	155	167	154	151	157	158	168	148	154	
Avg Points	9.2	8	9.0	7.7	7.8	7.0	8.0	7.3	7.9	7.4	8.5	8.1	8.2	8.2	8.3	8.7	
Avg Base	3.9	4	4.0	4.2	3.1	3.4	4.5	4.1	4.9	4.5	4.5	4.5	4.5	4.4	3.8	4.3	
Avg Length	17.7	17	18.3	18.3	15.9	17.2	17.2	16.9	18.9	16.1	18.3	18.1	18.2	18.2	16.6	18.1	
Avg Spread	14.0	14	14.5	14.8	14.0	13.7	14.8	13.0	15.3	13.6	15.3	14.6	14.0	13.1	13.1	14.4	

Comments

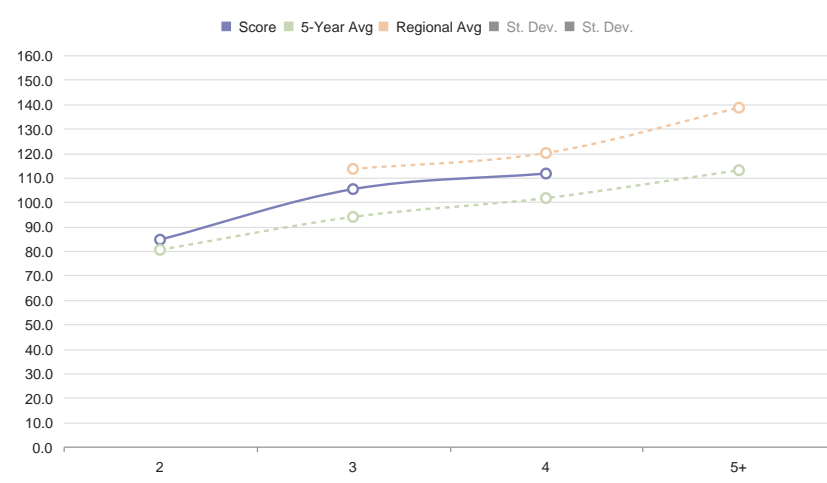


BUCK LIVE WEIGHTS

Click series in legend to toggle visibility.



B&C Score by Age



Estimated B&C Score

Age	Num	Estimated Non-typical B&C Score		
		At Harvest	At Maturity (Min)	At Maturity (Max)
2.5	14	84 5/8	117 4/8	137 4/8
3.5	13	105 2/8	121	134
4.5	7	111 5/8	117 4/8	122
5.5+	0	0	0	0

Comments