

DMAP Reports - Choctaw WMA - 2020

NRIS ID 6999 DMAP ID 9204

BIOLOGIST Masley COUNTY Choctaw County, MS

ACRES 24314 YEARS ON DMAP 30 SOIL REGION Upper Coastal Plain

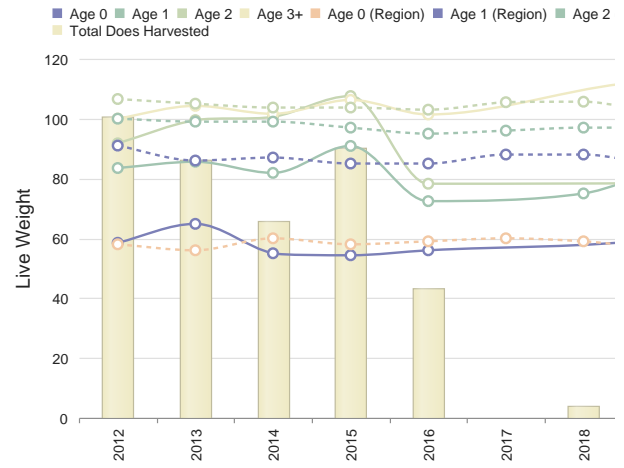
Introductory Comments

Harvest Summary

	Recommended Harvest	Number Harvested	Acres/Deer Harvested	% Data Collected
Bucks	0 - 0	30	810	100
Does	0 - 0	10	2431	90
Totals		40	607	97

Comments

Doe Weights with Harvest



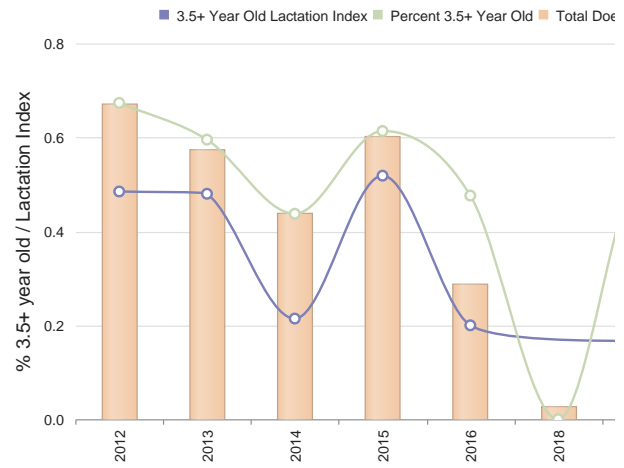
Comments

Harvest History

	Region Avg	2020	2019	2018	2017	2016	2015	2014	2013	2012	2011	2010	2009	2008
Acres	329909 24565	24314	24314	24314	24314	24314	24314	24314	24314	24314	24314	24314	24314	24314
Total Deer	2001.2 73	40	48	27	25	61	83	76	85	102	87	126	126	126
Bucks	848.6 34	30	35	25	22	29	26	36	36	39	52	44	71	71
Does	1152.6 38	10	13	2	3	32	57	40	49	63	35	82	55	55
Acres/Deer	164 336	607	506	900	972	398	292	319	286	238	279	192	192	192
Bucks	388 714	810	694	972	1105	838	935	675	675	623	467	552	342	342
Does	286 635	2431	1870	12157	8104	759	426	607	496	385	694	296	442	442

Comments

Doe Age Structure in Relation to Harvest and Lactation Rates



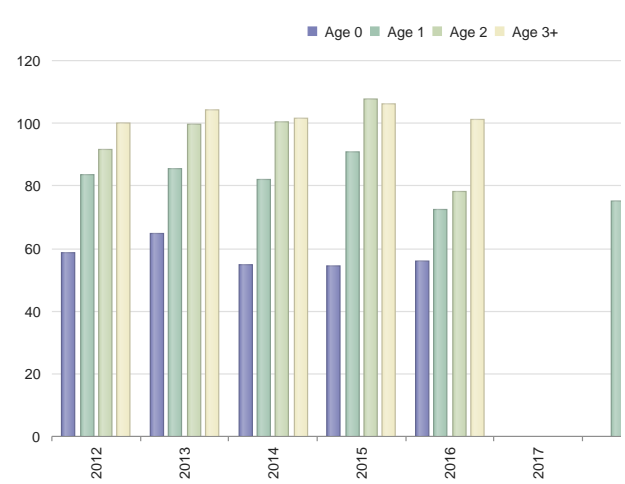
Comments

Buck Harvest History

	Region Avg	2020	2019	2018	2017	2016	2015	2014	2013	2012	2011	2010	2009	2008	2007	200	
Bucks	848.6	36.8	30	35	25	22	29	26	36	36	39	52	44	71	68	41	4
Acres/Buck	391.0	972.9	810	694	972	1105	838	935	675	675	623	467	552	342	357	593	60
% .5 Bucks	5.2	8.0	3	2	N/A	N/A	N/A	7	2	2	7	N/A	4	5	1	7	
# .5 Bucks	48.8	3.5	1	1	0	0	0	2	1	1	3	0	2	4	1	3	
Avg Weight	59.6	59.0	60	70	N/A	N/A	N/A	73	65	60	61	N/A	60	62	40	74	6
% 1.5 Bucks	11.0	19.3	3	N/A	4	4	N/A	N/A	5	2	5	7	13	15	11	N/A	
# 1.5 Bucks	99.4	8.1	1	0	1	1	0	0	2	1	2	4	6	11	8	0	
% Spikes	62.2	67.9	100	N/A	0	0	N/A	N/A	100	100	100	75	66	45	75	N/A	6
Avg Weight	98.8	95.3	80	N/A	110	105	N/A	N/A	102	82	106	105	87	100	106	N/A	9
Avg Points	2.6	3.1	2.0	N/A	5.0	7.0	N/A	N/A	2.0	2.0	2.0	3.8	2.5	2.5	2.6	N/A	2.
Avg Base	1.6	1.6	1.4	N/A	3.4	2.3	N/A	N/A	0.9	2.0	0.5	1.0	1.4	0.9	1.8	N/A	1.
Avg Length	4.8	5.2	3.8	N/A	12.3	12.6	N/A	N/A	1.7	2.6	2.3	3.3	4.6	3.3	5.5	N/A	4.
Avg Spread	5.2	4.1	4.0	N/A	10.5	9.0	N/A	N/A	1.3	3.0	1.5	3.3	3.3	2.3	3.3	N/A	3.
% 2.5 Bucks	19.2	29.0	33	8	36	18	44	34	50	44	15	26	22	30	11	17	3
# 2.5 Bucks	166.4	9.9	10	3	9	4	13	9	18	16	6	14	10	22	8	7	1
Avg Weight	134.6	128.6	127	134	126	119	126	131	139	128	134	133	128	127	131	133	14
Avg Points	6.4	6.6	6.4	7.3	7.0	6.5	7.8	7.0	7.3	6.4	6.8	6.3	6.4	7.0	6.5	7.6	8.
Avg Base	3.1	2.9	2.8	3.0	2.8	2.4	3.1	3.1	3.5	3.2	3.0	2.9	3.3	3.0	3.4	3.2	3.
Avg Length	13.6	12.8	13.4	14.5	13.8	15.0	14.0	13.8	14.1	13.6	12.3	12.8	13.2	13.5	13.9	14.5	15.
Avg Spread	11.1	10.4	10.8	12.1	10.8	12.3	11.3	11.8	12.1	10.4	9.3	10.5	11.4	11.4	8.8	12.6	13.
% 3.5 Bucks	27.8	26.3	36	57	40	54	13	23	13	16	25	38	27	25	16	34	4
# 3.5 Bucks	239.0	9.3	11	20	10	12	4	6	5	6	10	20	12	18	11	14	1
Avg Weight	147.4	140.7	136	131	142	154	129	130	150	161	135	137	141	139	145	137	15
Avg Points	7.3	7.7	7.4	8.0	8.6	6.8	7.3	7.3	8.8	9.7	7.9	8.4	7.8	8.6	7.1	7.9	8.
Avg Base	3.7	3.5	3.3	3.3	4.2	3.5	3.3	2.2	3.8	4.3	3.6	3.7	4.0	3.6	3.4	3.5	3.
Avg Length	15.8	14.9	14.4	15.7	16.4	15.9	15.3	9.7	16.3	17.8	14.5	15.9	17.2	15.2	14.9	15.7	17.
Avg Spread	12.8	11.9	12.0	12.7	13.7	13.4	12.6	9.4	15.0	14.3	10.7	12.8	12.9	13.0	12.1	12.1	14.
% 4.5+ Bucks	29.2	18.9	20	31	20	22	6	19	13	11	30	21	31	22	29	41	1
# 4.5+ Bucks	252.0	7.3	6	11	5	5	2	5	5	4	12	11	14	16	20	17	
Avg Weight	160.6	159.0	173	142	168	165	167	135	151	152	154	160	141	147	151	157	15
Avg Points	8.1	8.7	8.2	7.9	8.8	8.2	9.0	8.4	9.6	6.5	8.2	8.1	7.4	9.0	8.0	9.6	8.
Avg Base	4.2	4.2	4.0	4.0	4.6	3.9	3.1	3.6	4.8	4.3	4.1	4.2	4.4	4.3	4.3	4.3	4.
Avg Length	17.9	18.1	19.2	18.1	19.2	18.8	16.6	14.9	19.8	19.2	19.0	17.4	17.0	17.7	17.7	18.7	18.
Avg Spread	14.5	14.7	14.1	14.8	16.4	15.1	13.4	11.1	16.0	14.8	15.6	14.3	12.8	13.6	14.8	14.1	15.

Comments

Doe Live Weights



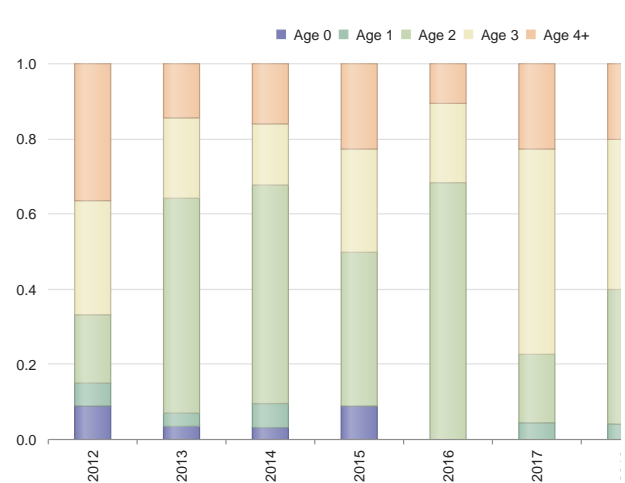
Comments

Doe Harvest History

	Region Avg	2020	2019	2018	2017	2016	2015	2014	2013	2012	2011	2010	2009	2008	2007	
Does	1152.6	40.0	10	13	2	3	32	57	40	49	63	35	82	55	57	44
Acres/Doe	289.6	1509.6	2431	1870	12157	8104	759	426	607	496	385	694	296	442	426	552
% .5 Does	9.8	13.7	40	15	N/A	N/A	21	15	10	12	15	2	9	5	7	N/A
# .5 Does	117.6	6.0	4	2	0	0	7	9	4	6	10	1	8	3	4	0
Avg Weight	59.0	54.4	69	60	N/A	N/A	56	54	55	64	58	58	60	55	48	N/A
% 1.5 Does	18.4	19.9	N/A	15	100	N/A	21	14	20	10	12	28	10	20	7	18
# 1.5 Does	217.4	7.3	0	2	2	0	7	8	8	5	8	10	9	11	4	8
Avg Weight	86.4	77.3	N/A	83	75	N/A	72	90	81	85	83	78	79	81	72	82
% 2.5 Does	16.0	16.9	30	23	N/A	N/A	12	15	25	24	12	11	18	29	5	13
# 2.5 Does	189.6	7.3	3	3	0	0	4	9	10	12	8	4	15	16	3	6
Avg Weight	96.0	90.0	99	78	N/A	N/A	78	107	100	99	91	90	91	87	87	91
% 3.5+ Does	50.6	51.8	30	46	N/A	N/A	31	47	35	51	52	45	60	45	70	52
# 3.5+ Does	588.6	22.4	3	6	0	0	10	27	14	25	33	16	50	25	40	23
Avg Weight	103.4	97.7	101	112	N/A	N/A	101	106	101	103	99	99	95	97	98	94
% Lactation	N/A															
1.5	10.0	18.4	N/A	50	0	N/A	0	0	0	0	12	0	11	0	25	0
2.5	47.8	46.7	33	0	N/A	N/A	50	44	30	25	37	0	26	18	66	33
2.5+	56.4	50.3	33	11	N/A	N/A	28	50	25	40	46	35	32	29	55	68
3.5+	59.6	54.7	33	16	N/A	N/A	20	51	21	48	48	43	34	36	55	78

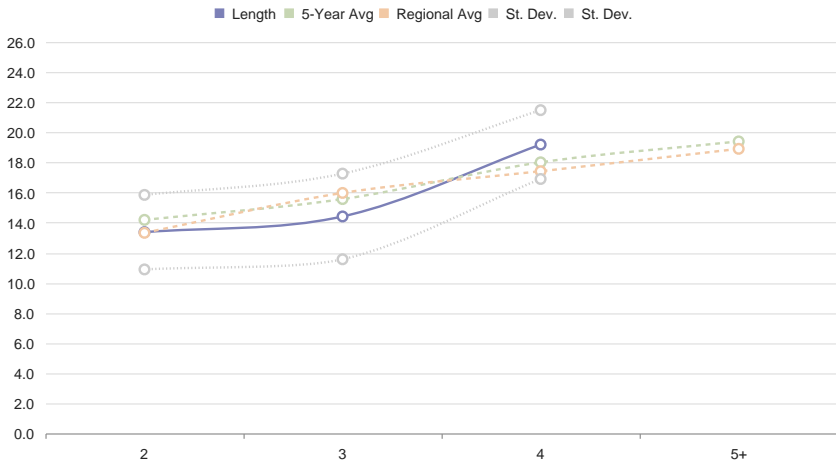
Comments

% Bucks by Age Class



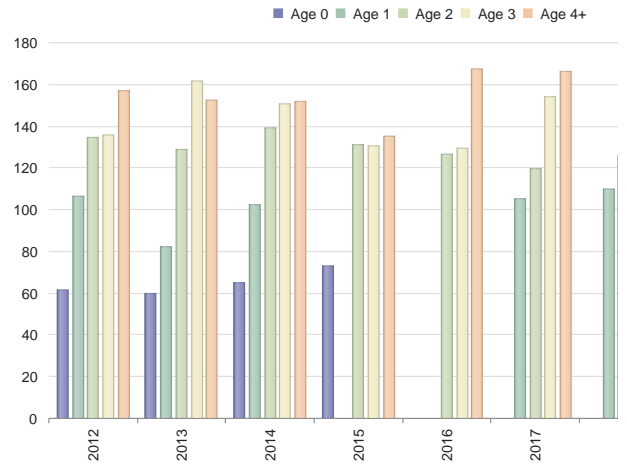
Comments

Main Beam Lengths by Age



Comments

Buck Live Weights



Comments

