

North Mississippi Fish

Hatchery

White Crappie

(*Pomoxis annularis*)



The North Mississippi Fish Hatchery is managed by the Fisheries Bureau of the Mississippi Department of Wildlife, Fisheries, and Parks.

Hatcheries help manage fishery resources by producing and stocking sport fish into Mississippi's public waters.

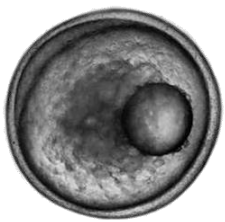
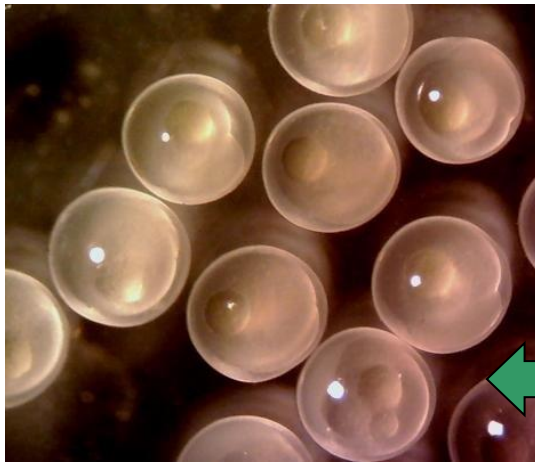
Crappie begin spawning in lakes in the spring when water temperatures reach 58 - 65 degrees Fahrenheit. Hatchery staff collects adult crappie from local lakes. Eggs are collected from these fish inside the hatchery.



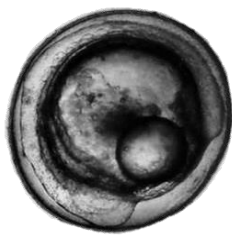
1. Egg

Fertilized eggs are placed into hatching jars where they are supplied with freshwater and oxygen.

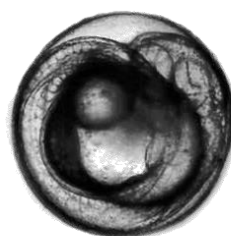
Crappie eggs hatch out in 24 to 48 hours!



After Fertilization



24 Hours Later



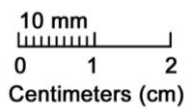
48 Hours Later

2. Fry

Newly hatched fish are called fry. Fry are born without mouths. A fry feeds off its yolk sac until its mouth develops!

Sizing them up!

Newly hatched fry are approximately 1½ mm long, from head to tail.



Think about it! One crappie egg is smaller than the end of your pencil tip, which is approximately 1 mm across!



At Hatching



Day 1



Day 2



Day 3



Day 4



Day 5

3. Fingerlings

After the fry have formed mouths, they are placed into hatchery ponds where they feed on plankton. These fish are harvested in the fall when they reach 2 to 4 inches in length. These fish are called fingerlings. Fingerlings are then stocked in lakes and ponds across Mississippi.



Learn more about the White Crappie and the North Mississippi Fish Hatchery at www.MDWFP.com.