



Lake Mike Conner 2020

REEL FACTS

Stephen Brown– Fisheries Biologist
Stephen.Brown@wfp.ms.gov

General Information: Lake Mike Conner is an 80 acre State Fishing Lake constructed in 1957. The lake was renovated in 1989 to replace the drain system. Mike Conner has been a popular destination for bream and Largemouth Bass anglers in recent years.

Location: Approximately 8 miles west of Collins off Hwy 84.

Fishery Management: Largemouth Bass, bream, crappie, and catfish.

Lake Depth Map: <http://www.mdwfp.com/media/5432/lake-mike-conner.pdf>

Purchase a Fishing License: https://www.ms.gov/mdwfp/hunting_fishing/

Amenities

- 1 public ramp with courtesy pier, parking lot, and public restroom with showers
- 2 handicapped fishing piers
- 15 camping pads with water/electric hookups

Creel and Size Limits

- Bream: 100 per day
- Catfish: 10 per day
- Crappie: 30 per day
- Largemouth Bass: 10 per day

Forage Species

- Golden Shiners
- Crawfish

Regulations

- Fishing is not allowed from courtesy pier adjacent to boat ramp.
- Rod and reel or pole fishing is allowed. No trotlines, FFFD's, jugs, yo-yo's, limblines, throwlines, or set hooks are allowed.
- Sport fishing licenses and fishing permits are required except on designated days during National Fishing and Boating Week.
- Skiing is allowed on Wednesday, Sunday, Memorial Day, July 4th, and Labor Day from noon to sunset within ski area.
- Lake is designated as No Wake all other times.

Fishing Tips

Bream

- Try crickets, red wigglers, and wax worms in shallow areas during late spring and summer. Redear Sunfish are often caught in the northeast side of the lake. Also, target shallow brush piles for Bluegill.

Catfish

- Try tightlining liver or blood scented bait along deep drop offs. Night fishing is typically good.

Crappie

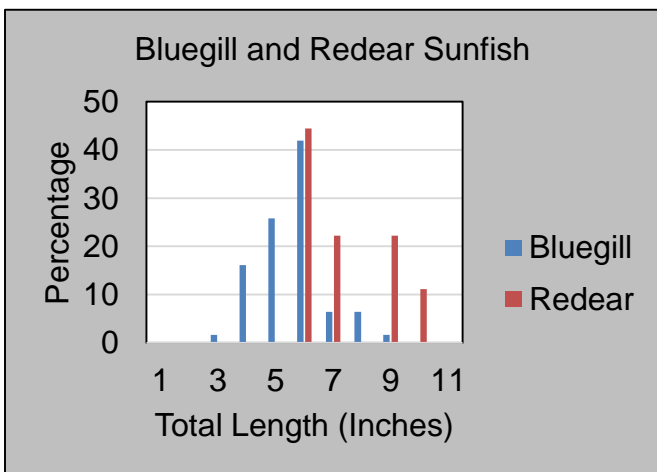
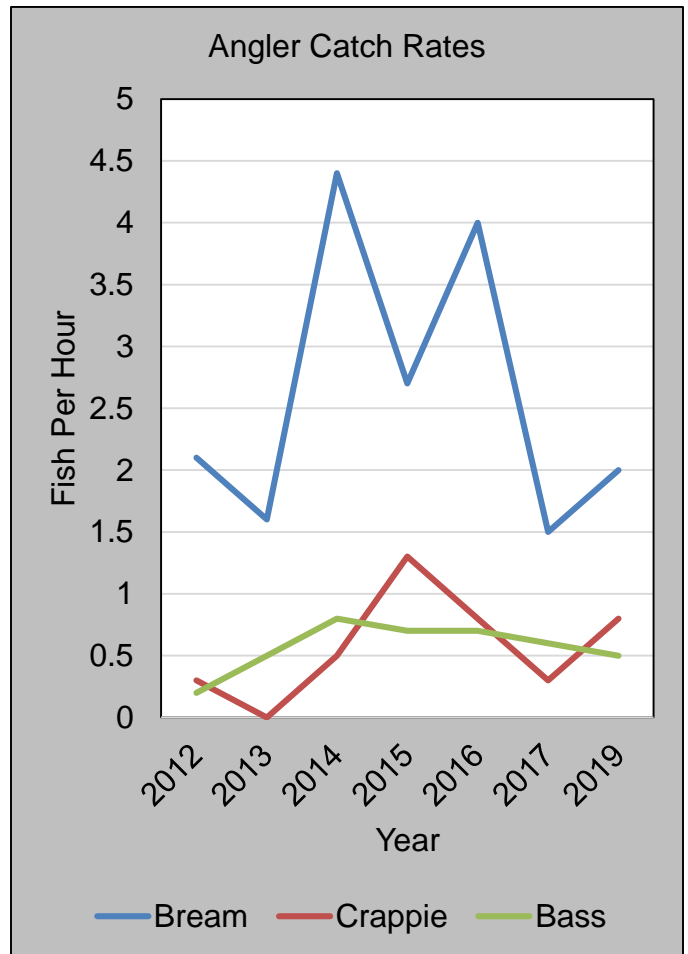
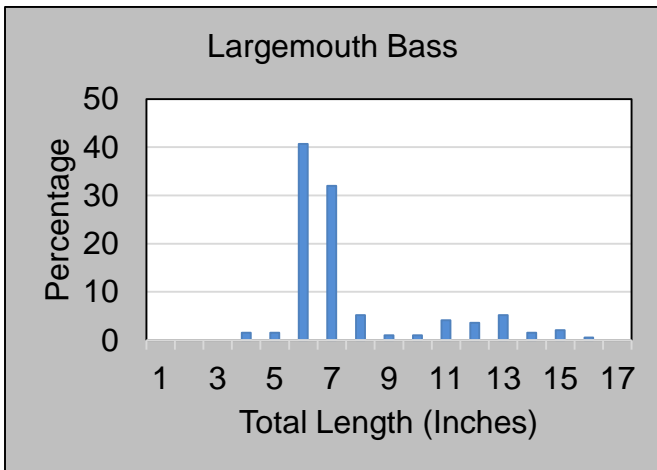
- Target brush piles along the dam and points. Smoke colored jigs and minnows are popular.

Largemouth Bass

- Target shallow weedlines in the morning with topwater baits. During the day, fish brush piles and docks with wacky rigged soft plastics and jerkbaits.

Below: Lake Mike Conner record fish. Record fish must be weighed and verified by the lake manager, lake supervisor, or fisheries biologist. Anglers who catch a lake record fish will receive a certificate acknowledging their catch.

Fish Species	Weight (pounds)	Angler	Date Caught
Largemouth Bass	10.7	John Lee Jr.	December 2018
Crappie	2.2	Charles M. Thompson	February 2017
Redear Sunfish	0.4	Aiden Key	July 2018
Bluegill	1.6	Marty Logan	May 2016
Catfish	29.05	Vince Pickering	September 2010

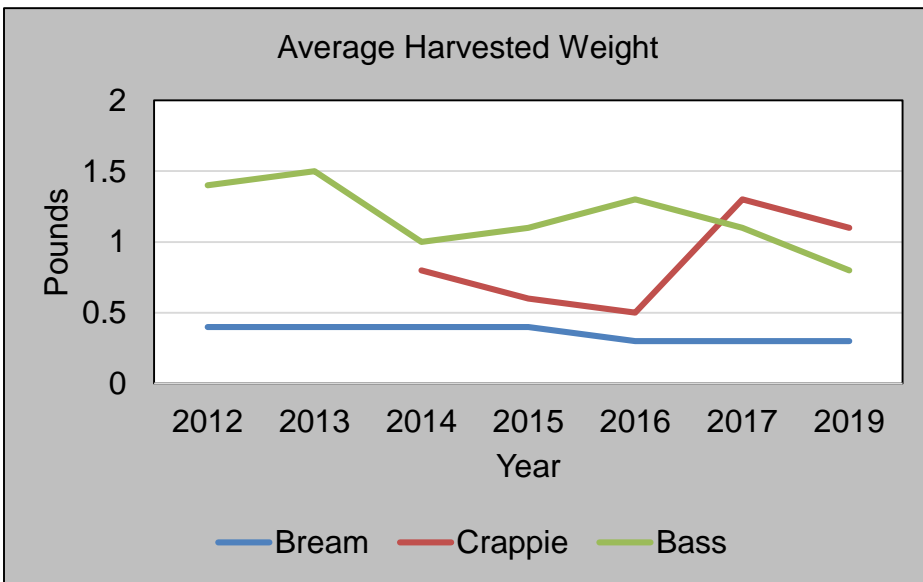


Above: Length distributions for Largemouth Bass, Bluegill, and Redear Sunfish collected during 2018 fall electrofishing.

Above: Angler catch rates for Largemouth Bass (LMB), bream, and crappie at Lake Mike Conner based on spring creel surveys.

Below: Results from the 2018 fall electrofishing survey conducted at Lake Mike Conner. The abundance of Bluegill and Largemouth Bass significantly increased since the 2014 fall electrofishing survey. Previous sampling efforts indicated a shift towards a balanced fishery. The increased coverage of the aquatic plant Southern Naiad may have increased survival of juvenile bass and bream. We encourage anglers to harvest small bass.

Species	# of fish collected	% of sample	Average Length (inches)	Maximum Length (inches)	Average Weight (pounds)	Catch Rate – Adult fish (fish/mile)
Bluegill	62	23	5.1	8.0	0.1	111
Redear Sunfish	9	3	6.9	9.7	0.2	16
Largemouth Bass	194	73	7.1	15.4	0.4	70
White Crappie	1	<1	8.1	8.1	0.2	2



Left: Average weight of angler harvested fish at Lake Mike Conner.

Below: The early morning hours offer the best Largemouth Bass fishing action as bass actively feed around shallow grass beds. Topwater baits and jerkbaits are excellent choices during this time at Lake Mike Conner.

