



Eagle Lake 2020 REEL FACTS

Ryan Jones – Fisheries Biologist
Ryan.Jones@wfp.ms.gov (601) 859-3421

General Information: Eagle Lake is a 4,700 acre oxbow formed by the Mississippi River and is cutoff from the river by the mainline levee system. Water levels are controlled via the Muddy Bayou control structure operated by U.S. Army Corps of Engineers. Eagle Lake is one of the largest oxbows in Mississippi and is a popular destination for bream and crappie anglers.

Location: Approximately 20 miles north of Vicksburg off Hwy 465.

Fishery Management: Largemouth Bass, bream, crappie, and catfish.

Purchase a Fishing License: https://www.ms.gov/mdwfp/hunting_fishing/

Lake Depth Map: <http://www.mdwfp.com/media/5416/eagle-lake.pdf>

Amenities

- 1 public ramp with courtesy piers, parking lot, and public restroom
- Multiple pay-to-use ramps
- Bait shops and store with gas

Creel and Size Limits

The following apply to both sides of the lake, including the channel to the Muddy Bayou control structure.

- Crappie: 11-inch minimum length limit and 30 crappie per day per angler
- Largemouth Bass: 16- inch minimum length limit and 10 bass per day per angler
- Hybrid Striped Bass: 15- inch minimum length limit and 6 bass per day per angler
- No limit on bream or catfish

Regulations

Eagle Lake is a state boundary water and the following regulations apply to the Mississippi side of the lake.

Yo-Yo's and Jugs

- No more than 25 jugs and no more than 25 yo-yos may be fished per person. No more than 2 hooks are allowed on each device.
- Each jug or yo-yo must be tagged or marked with angler's name and address.
- Anglers must attend jugs and yo-yos when fished during daylight hours.

Handgrabbing

- Hand grabbing season for catfish is open May 1 to July 15 each year.
- Only wooden containers may be placed in the lake.

Fishing Tips

Crappie

- Target shallow areas along the shoreline or islands during spring. In fall and winter, target piers in deep water on the eastern side of the lake.

Largemouth Bass

- Target piers and rocks along the eastern shoreline. Also target Cypress trees around the islands.

Bream

- Try crickets in shallow areas during late spring and summer. Big bluegill are often caught during winter around piers on the eastern side of the lake.

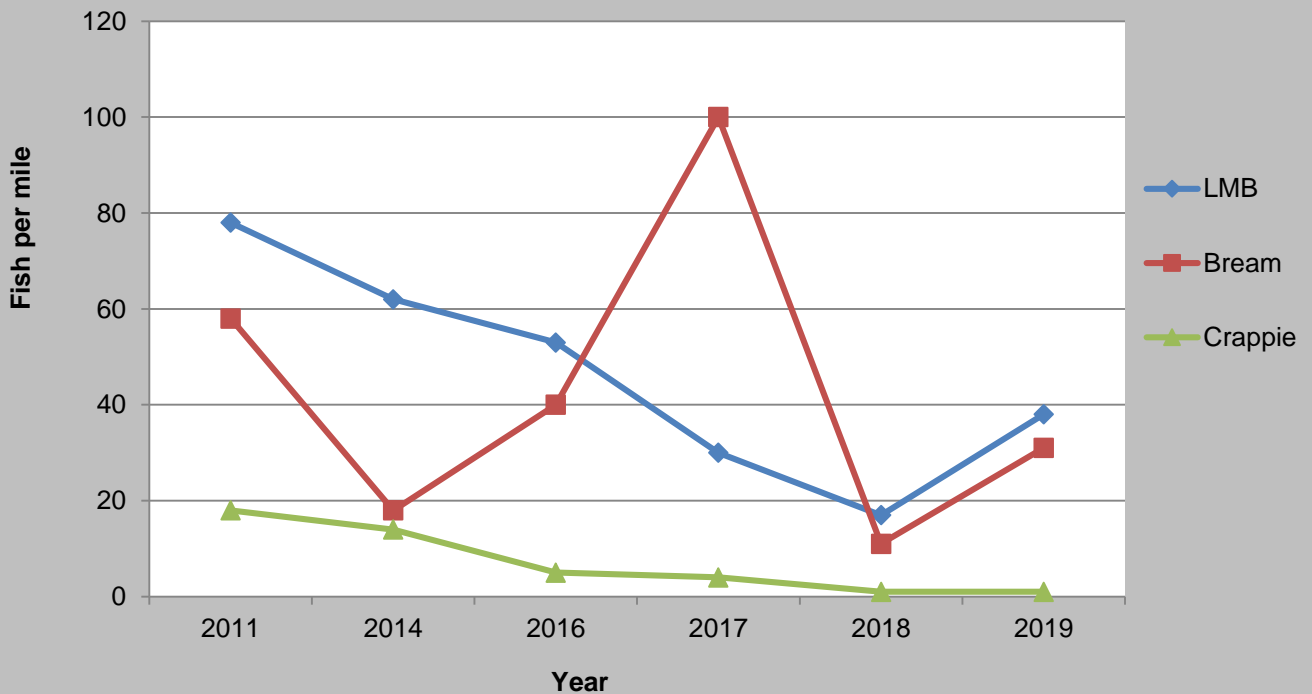
Catfish

- Target flats and islands on the western side of the lake with liver, worms, or cutbait.

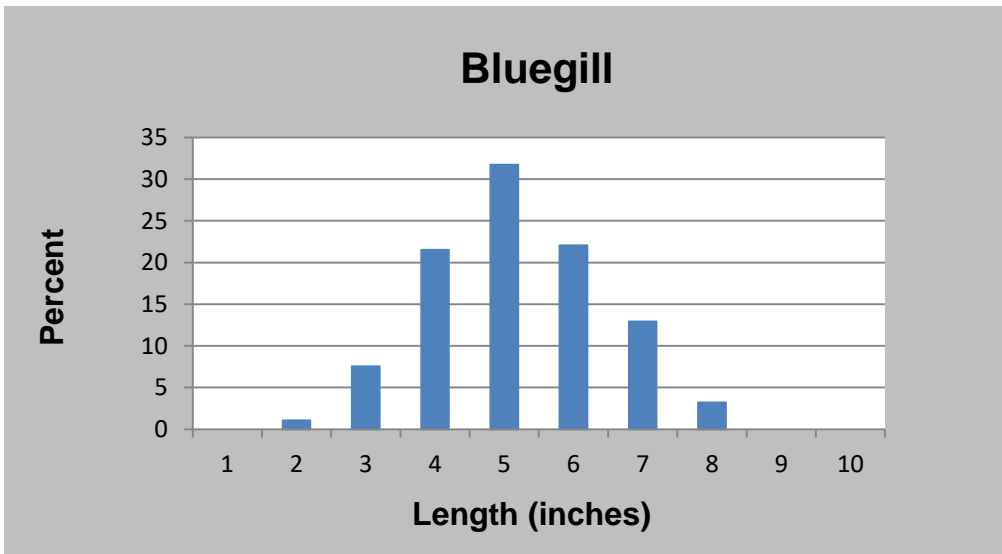
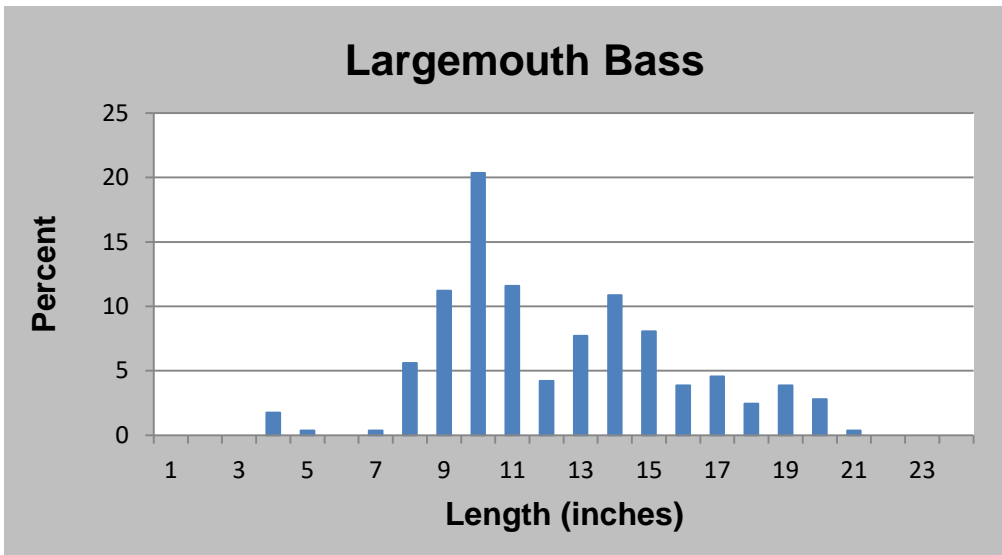
Below: Results from 2019 fall electrofishing surveys conducted at Eagle Lake. Largemouth Bass, White Crappie, and Redear Sunfish are stocked periodically by MDWFP to help maintain a quality fishery.

Species	# of fish collected	% of sample	Average Length (inches)	Maximum Length (inches)	Average Weight (pounds)	Catch Rate – Adult fish (fish/mile)
Largemouth bass	285	47	12.8	21.3	1.5	43
Bluegill	186	31	5.6	8.7	0.2	32
Gizzard shad	43	7	12.5	16.9	1.1	7
Yellow bass	41	7	5.8	9.2	0.2	6
White bass	11	2	9.4	16.3	0.8	2
Threadfin shad	13	2	2.6	4.1	-	0
Black crappie	8	1	6.3	13.3	1.6	0
Channel catfish	8	1	19.0	20.7	2.5	1
Redear Sunfish	7	1	7.0	9.0	0.2	1

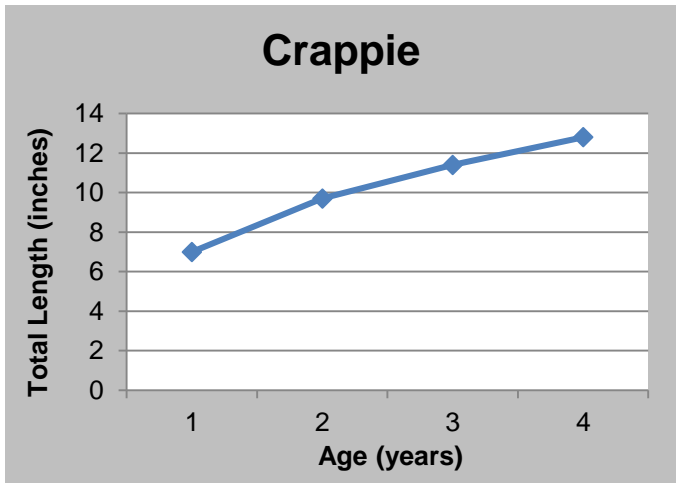
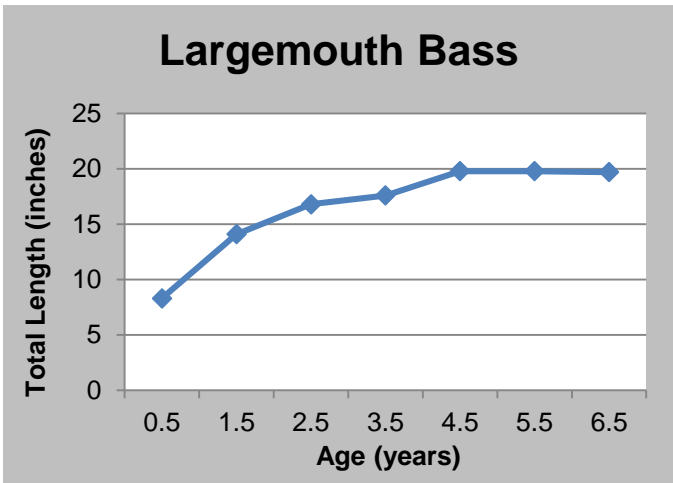
Electrofishing Catch Rates



Above: Changes in catch rates during fall electrofishing from 2011 through 2019 at Eagle Lake. Catch rates of Largemouth Bass and bream rose in 2019 after record flooding early in the year.

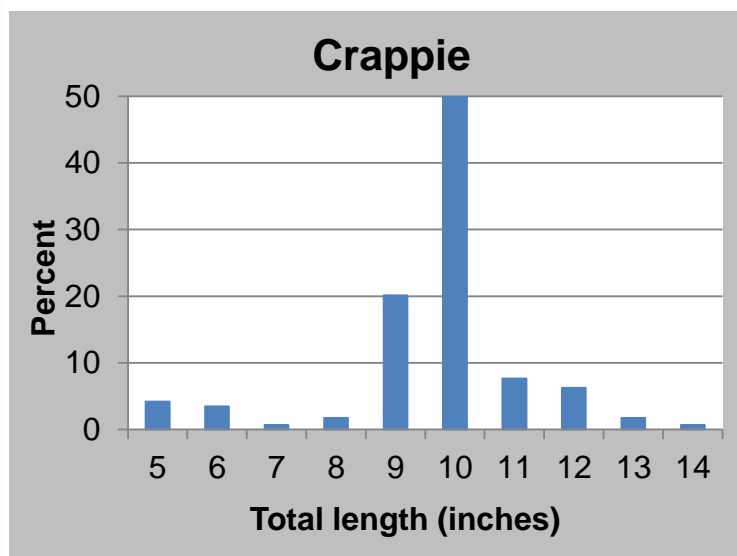


Above: Length distributions for Largemouth Bass and Bluegill collected during 2019 fall electrofishing at Eagle Lake. **Below:** Growth rates for Largemouth Bass and crappie at Eagle Lake. This lake promotes some of the fastest growing fish in the state due to high fertility and an abundance of forage, primarily shad. Ages are shown in half year or whole year increments due to the time of year that sampling occurred.



Below: Results from February 2018 lead net sampling at Eagle Lake. These nets are primarily used for sampling panfish, such as crappie and bream. Yellow Bass and White Bass dominated our catch, and anglers are encouraged to harvest as many as they want. The overall number of crappie collected was less than previous years; however, most of the fish were at or above the 11-inch minimum length limit. Anglers should expect to catch fewer, but larger crappie.

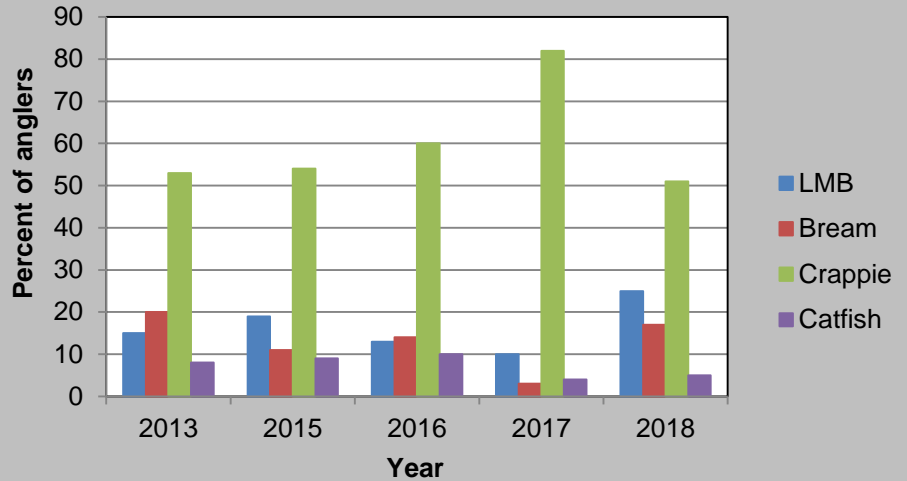
Species	# of fish collected	% of sample	Average Length (inches)	Maximum Length (inches)	Average Weight (pounds)	Catch Rate – Adult fish (fish/night)
Bluegill	287	28.3	15.8	24.5	0.4	71.8
Black crappie	278	27.4	15.2	18.2	0.7	69.5
Yellow Bass	214	21.1	13.0	16.5	-	53.5
Channel catfish	200	19.7	11.9	15.7	2.5	50.0
Common carp	12	1.2	10.2	14.2	-	3.0
White Crappie	10	1.0	9.5	12.8	0.5	2.5
Gizzard shad	5	0.5	9.3	12.4	-	1.3
White bass	3	0.3	9.1	10.3	2.2	0.8
Yellow bullhead	3	0.3	8.1	9.6	-	0.8
Warmouth	2	0.2	8.1	8.4	0.5	0.5
Redear sunfish	1	0.1	7.6	8.1	0.5	0.3



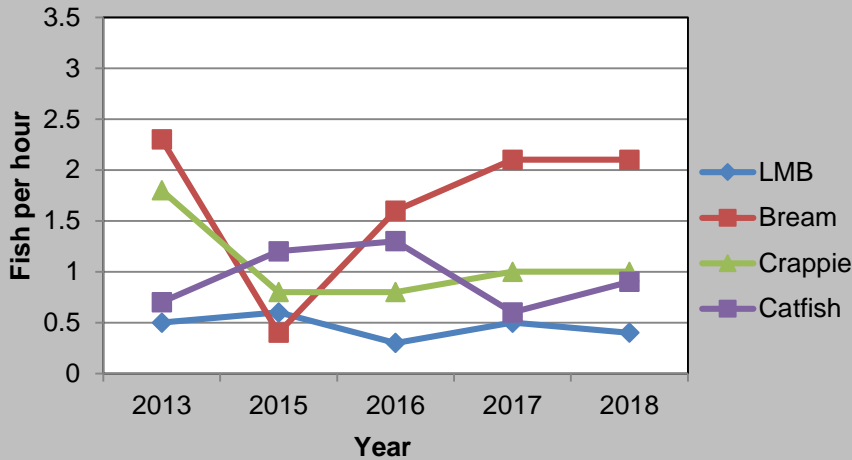
Above: Lengths of crappie collected during 2018 lead net sampling at Eagle Lake. The majority of crappie ranged from 9 to 10 inches, which are the result of a strong year class during 2016. Above average lake levels for the 2018 year, combined with crappie being stocked during December 2018, should increase the number of young fish in the population.

Targeted Species

Right: Percentage of anglers targeting Largemouth Bass (LMB), bream, crappie, and catfish at Eagle Lake. Crappie anglers continue to be the largest angler group at Eagle Lake.

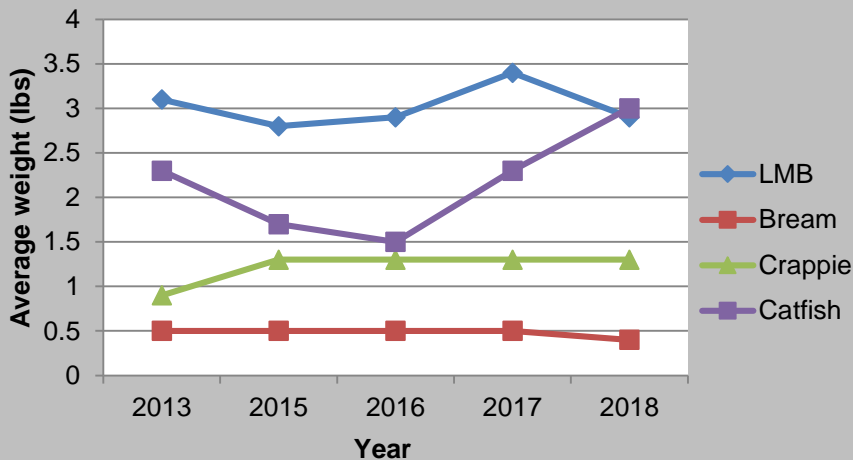


Angler Catch Rates



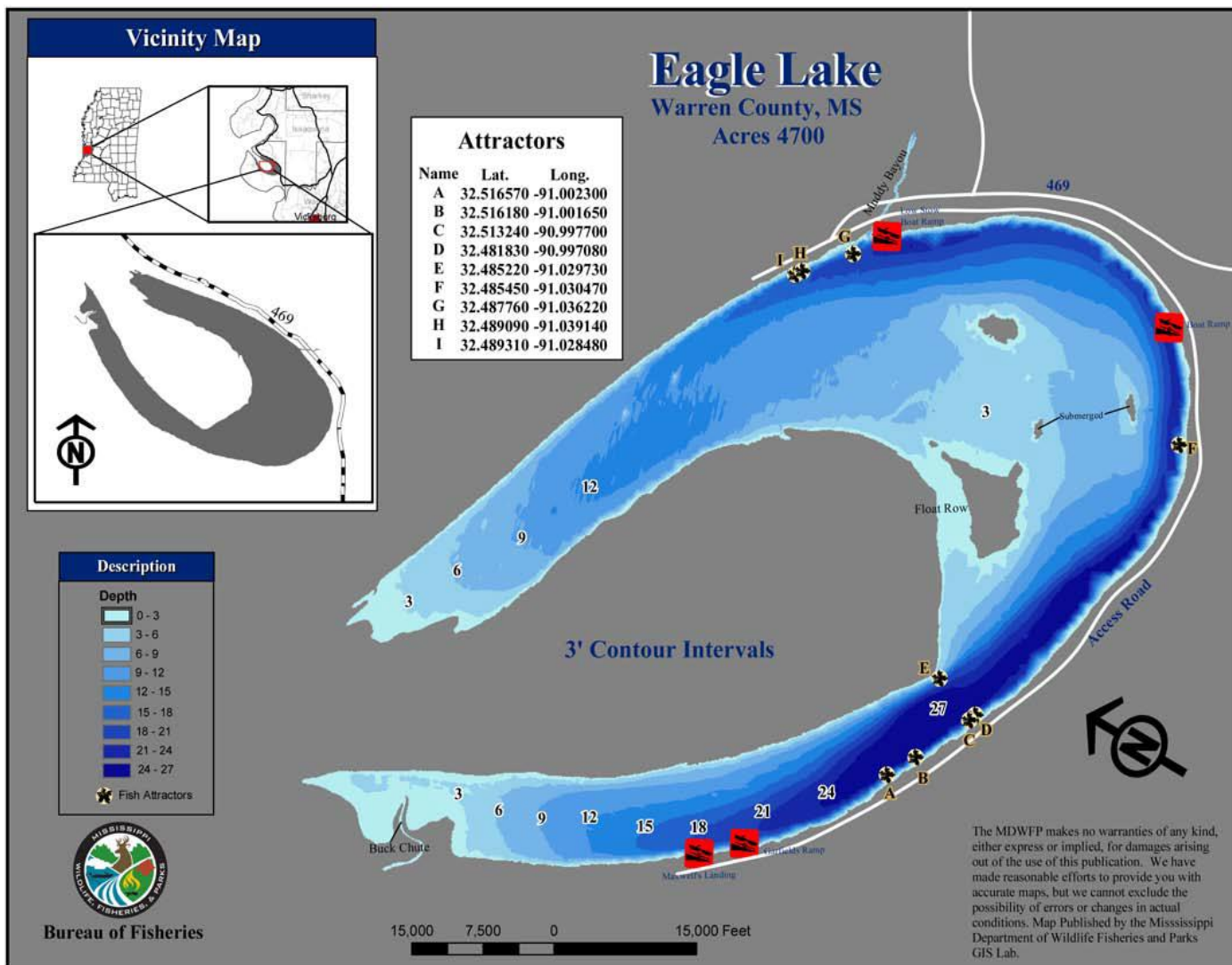
Left top: Angler catch rates for Largemouth Bass (LMB), bream, crappie, and catfish at Eagle Lake based on spring creel surveys. Bream catch rates have rebounded since 2015. MDWFP stocked over 225,000 Bluegill during the fall of 2015 which may have helped the bream fishery.

Average Weight Harvested



Left bottom: Average weight of harvested fish at Eagle Lake. The average weight of largemouth bass remained close to 3 pounds and crappie weights continued to 1.3 pounds since the 11-inch minimum length limit was put into effect.

Below: Depth map for Eagle Lake



Left: Numerous Largemouth Bass over five pounds were collected during 2019 fall electrofishing.