

DMAP Reports - Caney Creek - 2019

NRIS ID 6564 DMAP ID 6212

BIOLOGIST joshm COUNTY Scott County, MS

ACRES 28437 YEARS ON DMAP 28 SOIL REGION Black Prairie

Introductory Comments

Harvest Summary

	Recommended Harvest	Number Harvested	Acres/Deer Harvested	% Data Collected
Bucks	0 - 0	43	661	88
Does	0 - 0	15	1895	93
Totals		58	490	89

Comments

Harvest History

	Region Avg	2019	2018	2017	2016	2015	2014	2013	2012	2011	2010	2009	2008	2007	2006
Acres	4417	22728	28437	28437	28437	28437	28437	28437	28437	28437	28437	28437	28437	28437	28437
Total Deer	24.1	118	58	49	23	69	60	85	81	100	123	81	130	130	130
Bucks	9.1	70	43	42	19	30	31	48	43	35	64	33	65	65	65
Does	14.9	48	15	7	4	39	29	37	38	65	59	48	65	65	65
Acres/Deer	183	191	490	580	1236	412	473	334	351	284	231	351	218	218	218
Bucks	482	324	661	677	1496	947	917	592	661	812	444	861	437	437	437
Does	295	469	1895	4062	7109	729	980	768	748	437	481	592	437	437	437

Comments

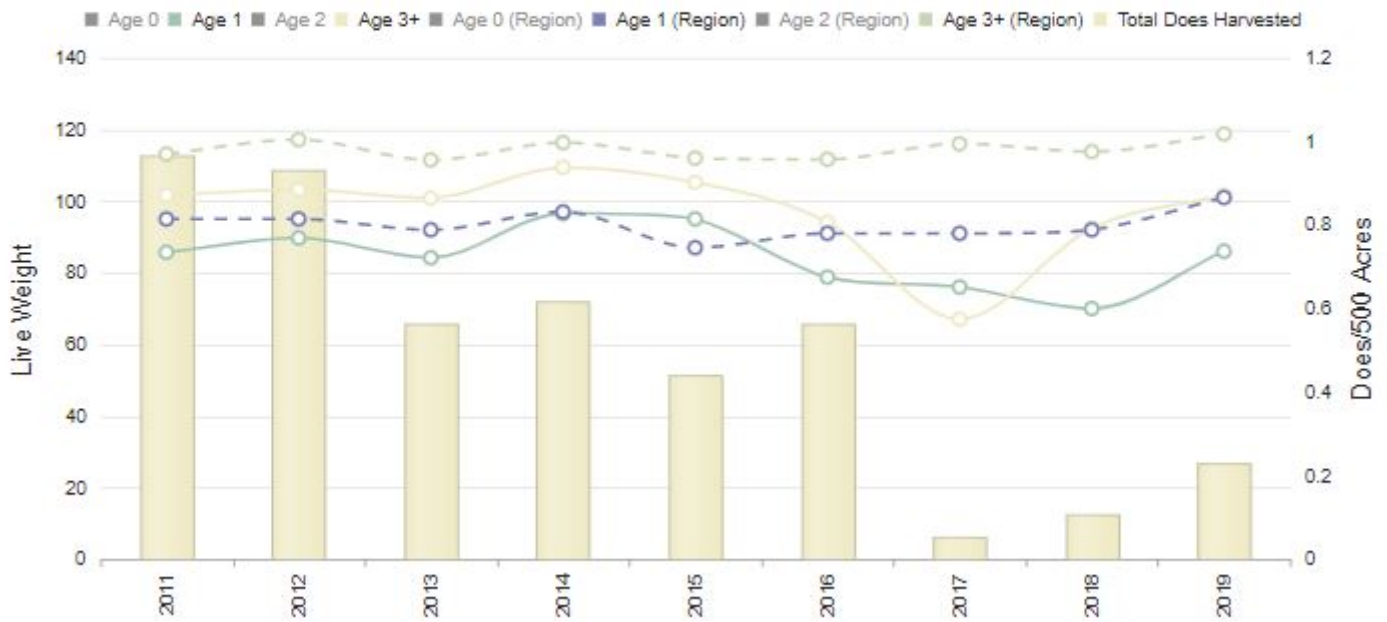
Doe Harvest History

	Region Avg	2019	2018	2017	2016	2015	2014	2013	2012	2011	2010	2009	2008	2007	2006
Does	14.9	50	15	7	4	39	29	37	38	65	59	48	65	40	45
Acres/Doe	328.6	884	1895	4062	7109	729	980	768	748	437	481	592	437	710	631
% .5 Does	7.0	10	13	N/A	N/A	N/A	13	2	10	9	1	10	N/A	2	2
# .5 Does	1.0	6	2	0	0	0	4	1	4	6	1	5	0	1	1
Avg Weight	63.2	56	73	N/A	N/A	N/A	71	50	59	72	65	62	N/A	55	55
% 1.5 Does	13.8	22	20	28	25	20	6	27	26	21	23	27	23	17	24
# 1.5 Does	2.4	11	3	2	1	8	2	10	10	14	14	13	15	7	11
Avg Weight	92.4	85	86	70	76	78	95	96	84	89	85	85	87	92	85
% 2.5 Does	24.2	24	26	28	25	28	24	24	15	23	16	22	23	10	35
# 2.5 Does	3.5	11	4	2	1	11	7	9	6	15	10	11	15	4	16
Avg Weight	103.0	94	89	104	98	80	96	102	97	96	94	99	94	101	101
% 3.5+ Does	46.8	40	40	28	25	33	55	43	42	36	52	39	47	70	37
# 3.5+ Does	6.7	21	6	2	1	13	16	16	16	24	31	19	31	28	17
Avg Weight	111.8	98	101	92	67	94	104	108	100	102	100	105	103	103	93
% Lactation	N/A	-	-	-	-	-	-	-	-	-	-	-	-	-	-
1.5	8.0	14	0	0	0	0	0	10	0	7	0	0	20	14	0
2.5	56.4	56	50	100	0	36	0	33	66	40	60	27	66	50	50
2.5+	61.4	54	30	75	0	37	17	32	68	41	56	50	54	46	48
3.5+	64.0	54	16	50	0	38	25	31	68	41	54	63	48	46	47

Comments

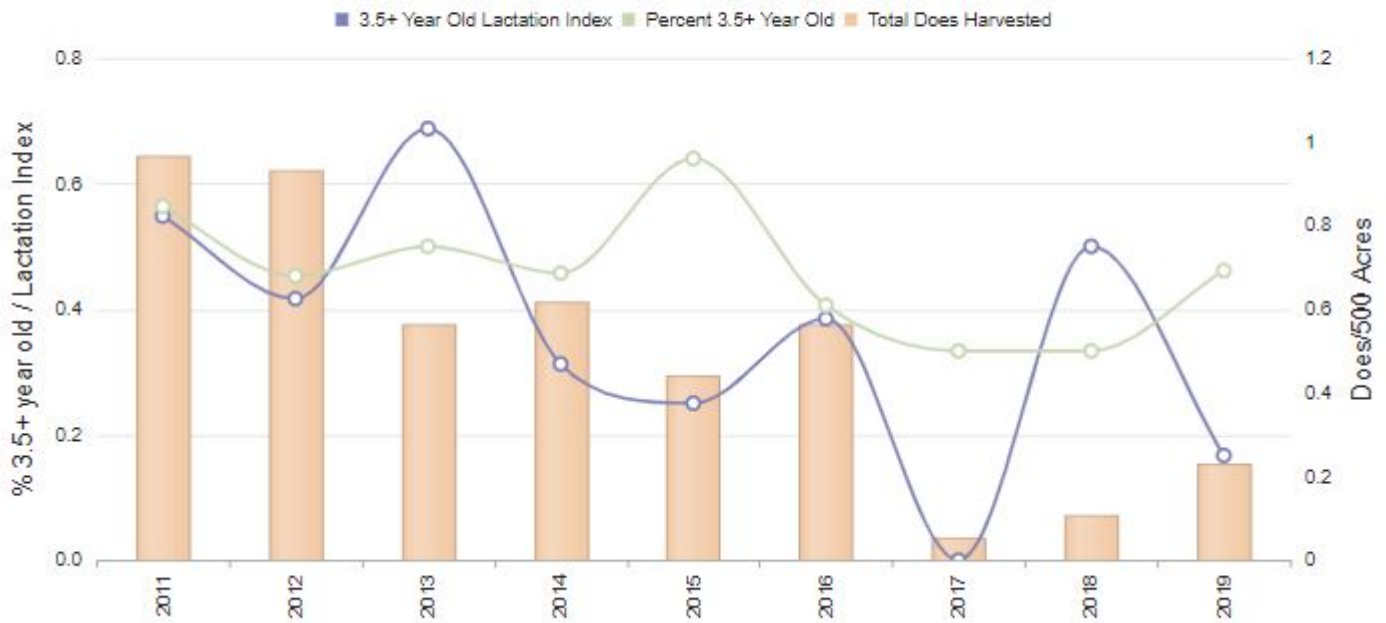
DOE WEIGHTS WITH HARVEST

Click series in legend to toggle visibility.



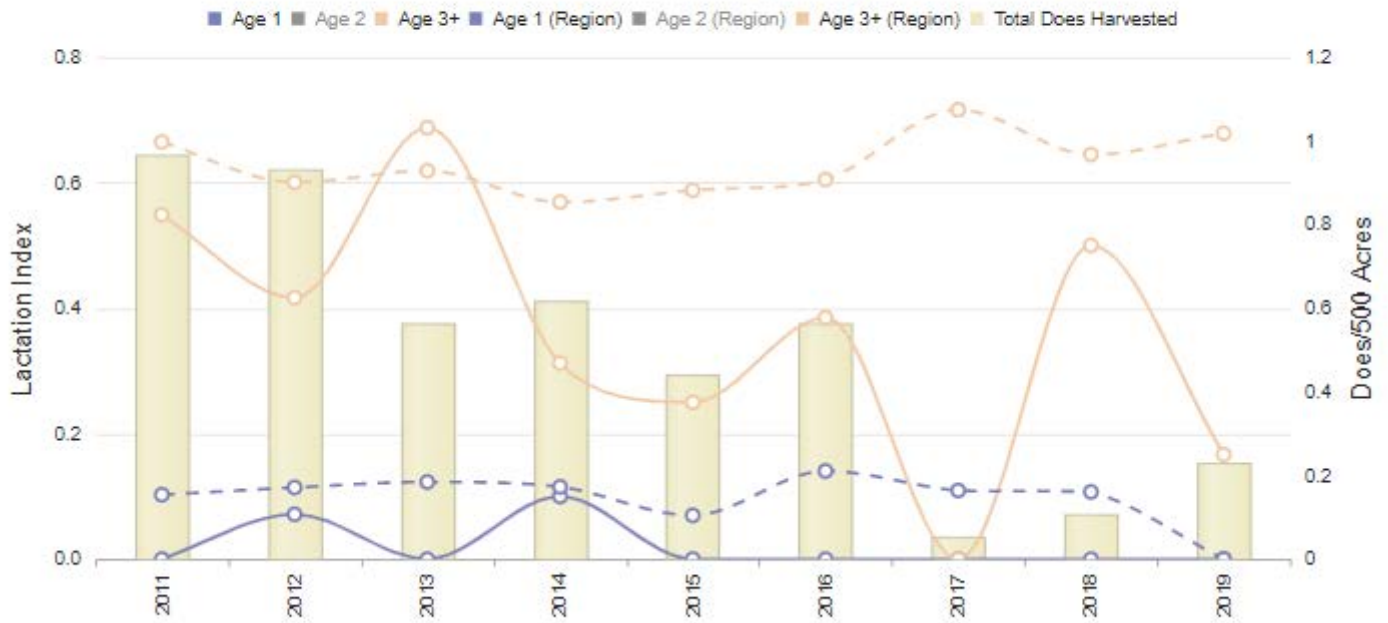
DOE AGE STRUCTURE IN RELATION TO HARVEST AND LACTATION RATES

Click series in legend to toggle visibility.



% DOE LACTATION

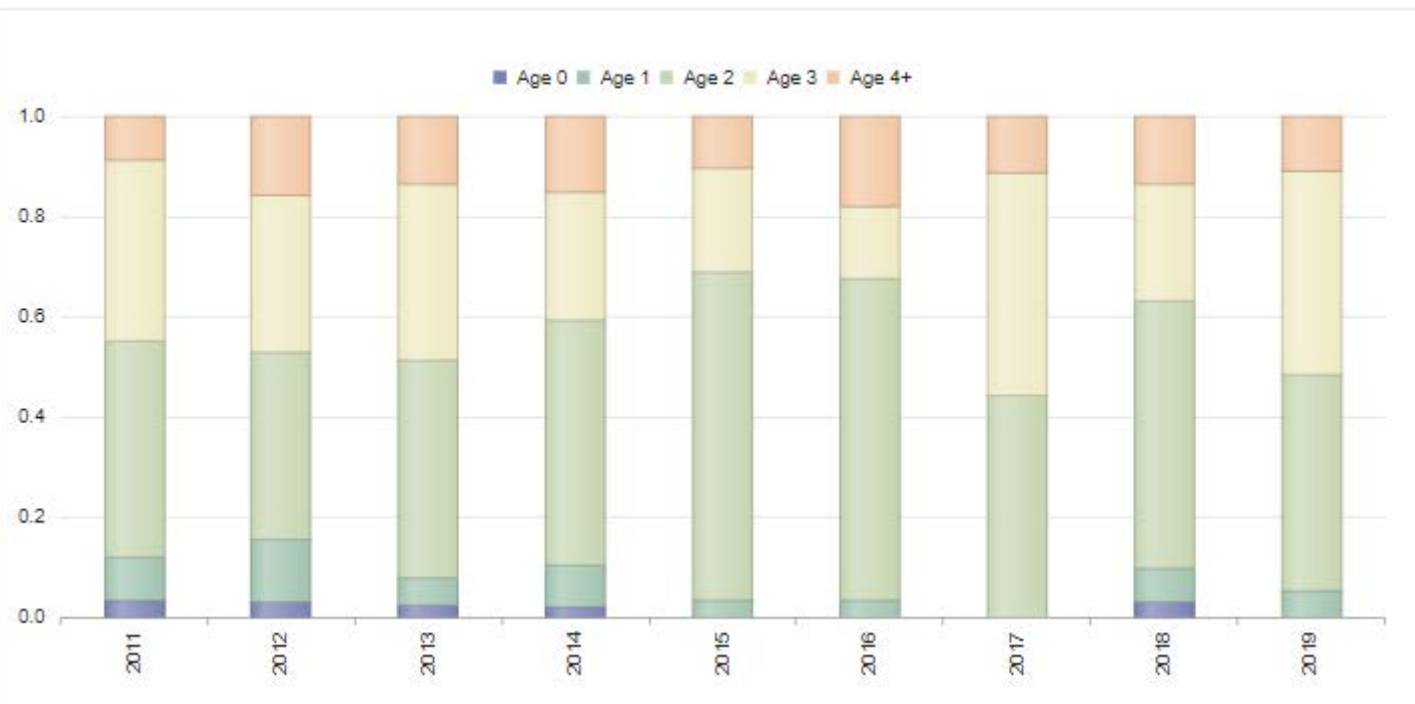
Click series in legend to toggle visibility.



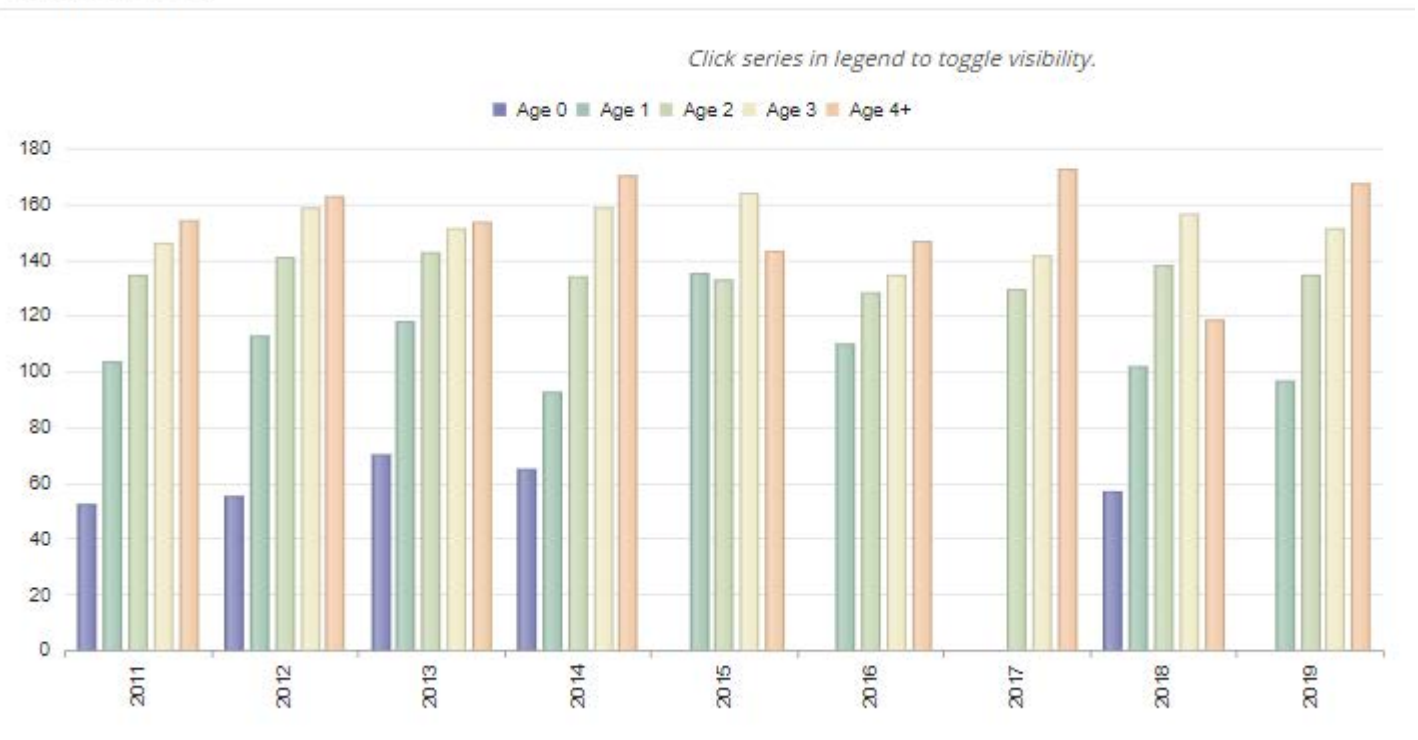
Buck Harvest History

	Region Avg	2019	2018	2017	2016	2015	2014	2013	2012	2011	2010	2009	2008	2007	2006	
Bucks	9.2	72	43	42	19	30	31	48	43	35	64	33	65	43	57	1
Acres/Buck	487.8	505	661	677	1496	947	917	592	661	812	444	861	437	661	498	157
% .5 Bucks	3.0	4	N/A	2	N/A	N/A	N/A	2	2	2	3	N/A	N/A	N/A	N/A	N/A
# .5 Bucks	0.3	4	0	1	0	0	0	1	1	1	2	0	0	0	0	0
Avg Weight	59.6	57	N/A	57	N/A	N/A	N/A	65	70	55	52	N/A	N/A	N/A	N/A	N/A
% 1.5 Bucks	7.6	23	4	4	N/A	3	3	8	4	11	7	9	16	4	7	1
# 1.5 Bucks	0.7	24	2	2	0	1	1	4	2	4	5	3	11	2	4	4
% Spikes	65.0	42	50	0	N/A	0	0	75	50	50	20	66	54	0	75	10
Avg Weight	106.6	107	96	102	N/A	110	135	92	118	113	103	101	101	123	104	10
Avg Points	2.7	3	3.0	4.0	N/A	6.0	6.0	2.3	3.0	4.5	4.0	3.3	3.0	5.0	2.3	2.
Avg Base	1.5	2	0.9	1.6	N/A	2.8	2.8	0.6	2.9	2.1	2.3	2.1	0.9	0.0	1.9	2.
Avg Length	4.5	6	3.4	7.4	N/A	10.5	15.4	1.9	7.9	7.8	7.7	5.6	4.1	0.0	4.3	6.
Avg Spread	4.4	5	4.0	7.3	N/A	9.5	0.0	1.4	6.0	6.8	6.2	6.0	5.2	0.0	4.4	3.
% 2.5 Bucks	20.4	33	37	38	42	60	61	47	37	34	39	27	27	23	17	4
# 2.5 Bucks	2.1	22	16	16	8	18	19	23	16	12	25	9	18	10	10	10
Avg Weight	126.6	133	134	138	129	128	132	134	142	141	134	147	138	133	136	14
Avg Points	6.1	6	7.2	7.4	6.5	7.3	6.5	7.1	6.8	7.6	7.0	6.4	6.9	7.4	6.4	8.
Avg Base	3.1	3	3.4	3.3	3.0	3.4	3.2	3.2	3.1	3.1	3.3	3.7	3.5	3.0	3.3	3.
Avg Length	12.4	13	14.3	15.8	15.1	14.8	14.9	14.7	13.6	14.9	14.3	15.6	14.6	12.6	15.6	13.
Avg Spread	9.8	10	11.1	12.5	13.0	12.2	12.1	12.2	12.2	11.6	10.8	12.0	11.6	10.8	11.6	11.
% 3.5 Bucks	27.2	24	34	16	42	13	19	25	30	28	32	48	29	51	47	1
# 3.5 Bucks	2.6	15	15	7	8	4	6	12	13	10	21	16	19	22	27	27
Avg Weight	160.4	148	151	156	141	134	164	159	151	158	145	141	144	151	143	14
Avg Points	7.9	7	7.5	9.1	7.3	8.0	8.2	8.4	8.5	7.9	7.6	7.3	7.6	7.7	7.9	8.
Avg Base	3.8	3	3.5	4.0	3.7	2.7	3.3	3.9	3.4	3.9	3.6	3.9	3.9	3.7	3.8	4.
Avg Length	16.7	15	15.9	18.0	16.3	15.7	18.4	16.6	17.1	16.9	15.2	16.2	15.9	15.3	16.0	17.
Avg Spread	13.5	12	13.3	12.9	12.7	12.6	15.5	12.9	13.7	13.0	12.5	13.2	12.8	12.9	12.6	12.
% 4.5+ Bucks	35.4	11	9	9	10	16	9	14	11	14	7	15	21	20	28	2
# 4.5+ Bucks	3.0	7	4	4	2	5	3	7	5	5	5	5	14	9	16	16
Avg Weight	176.4	155	167	118	172	146	143	169	153	163	153	150	167	156	147	15
Avg Points	9.2	7	8.5	8.5	9.0	9.0	7.3	9.0	8.4	8.0	8.0	7.6	8.8	7.6	8.3	8.
Avg Base	3.9	4	4.9	4.4	4.4	4.1	3.4	4.3	4.4	4.6	4.9	4.2	4.4	4.2	4.2	4.
Avg Length	17.7	18	21.5	20.4	20.3	18.6	17.9	18.3	18.9	19.0	19.9	16.4	19.0	17.6	18.0	19.
Avg Spread	14.0	14	15.4	17.2	16.5	14.9	14.1	14.0	15.2	15.4	16.6	13.1	15.2	12.8	14.0	13.

% BUCKS BY AGE CLASS



BUCK LIVE WEIGHTS

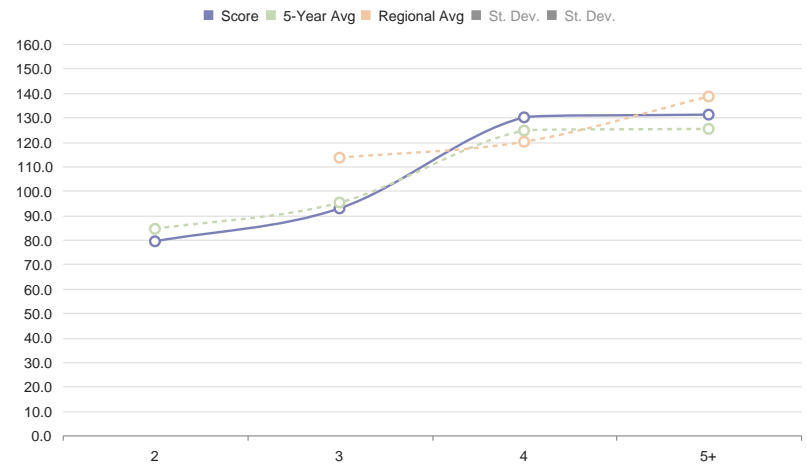


Estimated B&C Score

Estimated Non-typical B&C Score				
Age	Num	At Harvest	At Maturity (Min)	At Maturity (Max)
2.5	16	79 2/8	110 1/8	129
3.5	15	92 6/8	106 5/8	118 1/8
4.5	3	130	136 7/8	142 1/8
5.5+	1	131 1/8	131 1/8	131 1/8

Comments

B&C Score by Age



Comments