

DMAP Reports - Sky Lake WMA - 2019

NRIS ID 7571 DMAP ID MS-5889

BIOLOGIST RogerT COUNTY Humphreys County, MS

ACRES 4306 YEARS ON DMAP 9 SOIL REGION Delta

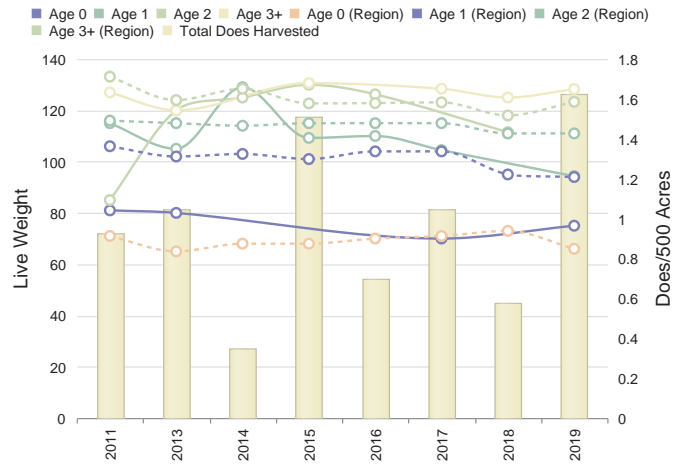
Introductory Comments

Harvest Summary

	Recommended Harvest	Number Harvested	Acres/Deer Harvested	% Data Collected
Bucks	0 - 0	9	478	100
Does	0 - 0	16	269	100
Totals		25	172	100

Comments

Doe Weights with Harvest



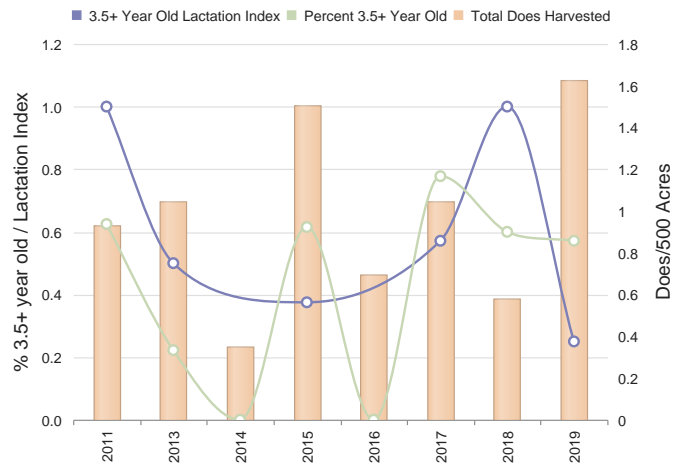
Comments

Harvest History

	Region Avg	2019	2018	2017	2016	2015	2014	2013	2012	2011	2010
Acres	5042 4306	4306	4306	4306	4306	4306	4306	4306	4306	4306	4306
Total Deer	35.6 15	25	10	16	15	21	5	22	11	20	6
Bucks	14.6 7	9	5	6	9	8	2	12	11	11	6
Does	21.0 7	16	5	10	6	13	3	10	0	9	0
Acres/Deer	141 285	172	430	269	287	205	861	195	391	215	717
Bucks	346 545	478	861	717	478	538	2153	358	391	391	717
Does	240 598	269	861	430	717	331	1435	430	N/A	478	N/A

Comments

Doe Age Structure in Relation to Harvest and Lactation Rates



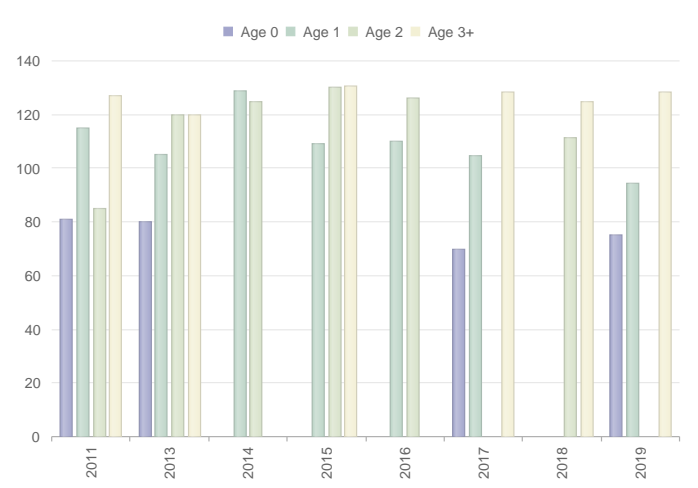
Comments

Buck Harvest History

	Region	Avg	2019	2018	2017	2016	2015	2014	2013	2012	2011	2010
Bucks	14.6	7	9	5	6	9	8	2	12	11	11	6
Acres/Buck	361.4	708	478	861	717	478	538	2153	358	391	391	717
% .5 Bucks	2.2	16	N/A	N/A	N/A	N/A	N/A	N/A	N/A	N/A	N/A	16
# .5 Bucks	0.4	1	0	0	0	0	0	0	0	0	0	1
Avg Weight	72.8	95	N/A	N/A	N/A	N/A	N/A	N/A	N/A	N/A	N/A	95
% 1.5 Bucks	7.8	16	N/A	20	N/A	N/A	12	N/A	N/A	N/A	N/A	N/A
# 1.5 Bucks	1.2	1	0	1	0	0	1	0	0	0	0	0
% Spikes	70.8	100	N/A	0	N/A	N/A	100	N/A	N/A	N/A	N/A	N/A
Avg Weight	120.6	134	N/A	128	N/A	N/A	140	N/A	N/A	N/A	N/A	N/A
Avg Points	2.5	2	N/A	3.0	N/A	N/A	2.0	N/A	N/A	N/A	N/A	N/A
Avg Base	1.6	2	N/A	2.3	N/A	N/A	2.0	N/A	N/A	N/A	N/A	N/A
Avg Length	4.8	6	N/A	7.5	N/A	N/A	6.3	N/A	N/A	N/A	N/A	N/A
Avg Spread	4.4	6	N/A	5.5	N/A	N/A	6.5	N/A	N/A	N/A	N/A	N/A
% 2.5 Bucks	10.0	31	11	N/A	16	55	62	50	33	27	9	16
# 2.5 Bucks	1.5	2	1	0	1	5	5	1	4	3	1	1
Avg Weight	167.6	173	125	N/A	195	159	172	205	175	175	165	193
Avg Points	7.0	7	8.0	N/A	6.0	7.6	7.4	10.0	6.5	9.3	7.0	8.0
Avg Base	3.4	3	2.0	N/A	3.0	3.0	3.4	4.0	2.9	2.8	3.1	4.1
Avg Length	15.7	16	11.5	N/A	13.0	16.0	15.8	24.0	17.9	15.3	13.8	18.3
Avg Spread	13.4	13	13.0	N/A	13.0	13.6	14.0	15.0	14.3	13.3	12.5	14.0
% 3.5 Bucks	25.8	31	11	20	33	33	12	50	50	36	36	33
# 3.5 Bucks	3.8	2	1	1	2	3	1	1	6	4	4	2
Avg Weight	187.0	192	203	160	177	198	195	200	203	175	187	229
Avg Points	8.0	8	8.0	8.0	9.0	9.0	10.0	10.0	6.3	6.0	6.5	8.0
Avg Base	4.1	3	3.4	4.7	4.5	3.8	4.4	3.6	3.5	3.7	3.2	4.4
Avg Length	18.4	17	17.9	20.7	18.1	17.8	19.3	13.8	14.9	17.5	13.6	19.4
Avg Spread	15.0	13	16.0	18.5	15.0	13.8	16.3	12.5	11.5	14.5	6.8	13.0
% 4.5+ Bucks	49.0	35	77	60	33	11	12	N/A	16	36	45	33
# 4.5+ Bucks	7.3	3	7	3	2	1	1	0	2	4	5	2
Avg Weight	196.4	199	200	180	234	190	200	N/A	215	189	204	182
Avg Points	8.4	7	8.4	8.0	10.0	10.0	8.0	N/A	5.0	8.8	8.2	4.0
Avg Base	4.5	4	4.4	4.5	4.9	4.5	3.0	N/A	4.8	4.2	4.6	4.6
Avg Length	20.0	20	20.4	20.0	22.5	19.5	19.5	N/A	18.8	19.3	19.0	21.3
Avg Spread	16.1	15	16.6	18.3	15.6	15.0	14.0	N/A	15.3	15.9	15.5	15.8

Comments

Doe Live Weights



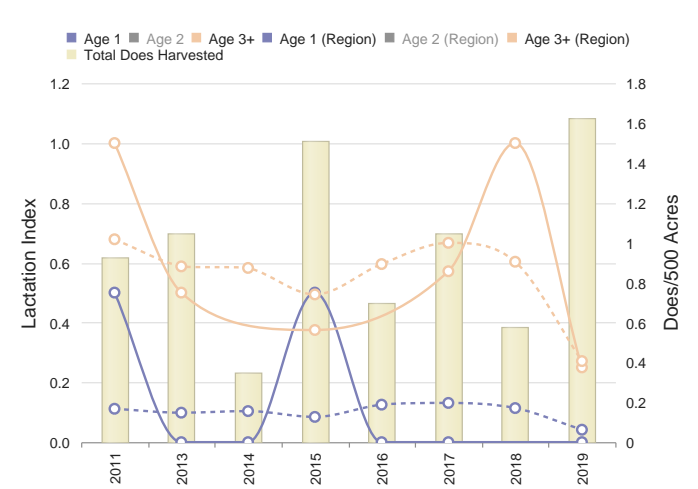
Comments

Doe Harvest History

	Region	Avg	2019	2018	2017	2016	2015	2014	2013	2012	2011	2010
Does	21.0	9	16	5	10	6	13	3	10	0	9	0
Acres/Doe	272.6	618	269	861	430	717	331	1435	430	478		
% .5 Does	7.8	10	12	N/A	10	N/A	N/A	N/A	10	N/A	11	N/A
# .5 Does	1.9	1	2	0	1	0	0	0	1	0	1	0
Avg Weight	69.6	76	75	N/A	70	N/A	N/A	N/A	80	N/A	81	N/A
% 1.5 Does	19.8	32	37	N/A	20	33	30	33	50	N/A	22	N/A
# 1.5 Does	4.2	3	6	0	2	2	4	1	5	0	N/A	2
Avg Weight	99.6	109	94	N/A	104	110	109	129	105	N/A	115	N/A
% 2.5 Does	19.6	35	N/A	40	N/A	66	7	66	20	N/A	11	N/A
# 2.5 Does	4.1	2	0	2	0	4	1	2	2	0	1	0
Avg Weight	113.4	116	N/A	111	N/A	126	130	125	120	N/A	85	N/A
% 3.5+ Does	49.6	51	50	60	70	N/A	53	N/A	20	N/A	55	N/A
# 3.5+ Does	10.6	5	8	3	7	0	7	0	2	0	5	0
Avg Weight	120.8	126	125	125	128	N/A	134	N/A	120	N/A	127	N/A
% Lactation	N/A	-										
1.5	9.6	50	0	N/A	0	0	50	0	0	N/A	50	N/A
2.5	42.4	80	N/A	100	N/A	50	100	50	0	N/A	100	N/A
2.5+	49.6	72	25	100	57	125	50	100	25	N/A	100	N/A
3.5+	52.2	62	25	100	57	N/A	42	N/A	50	N/A	100	N/A

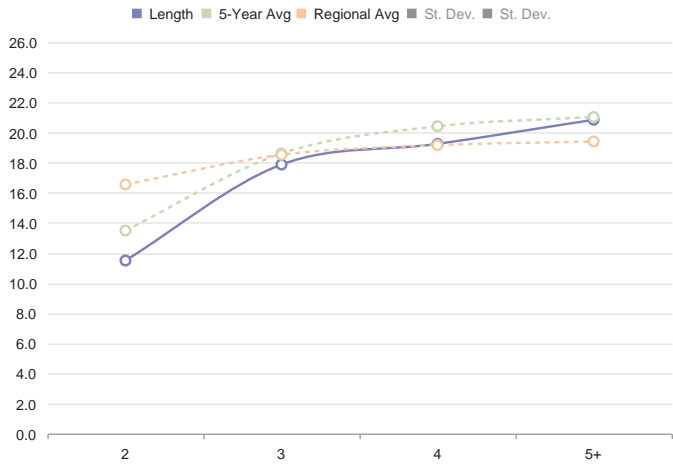
Comments

% Doe Lactation



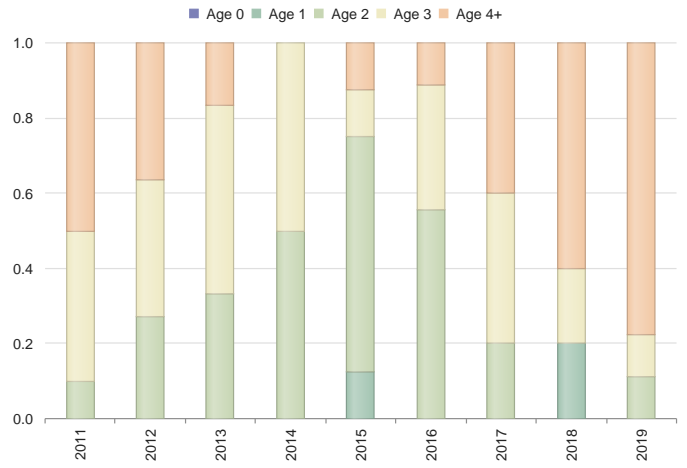
Comments

Main Beam Lengths by Age



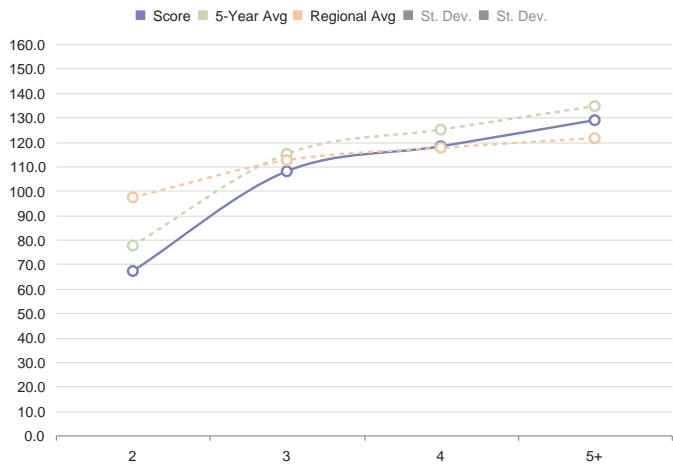
Comments

% Bucks by Age Class



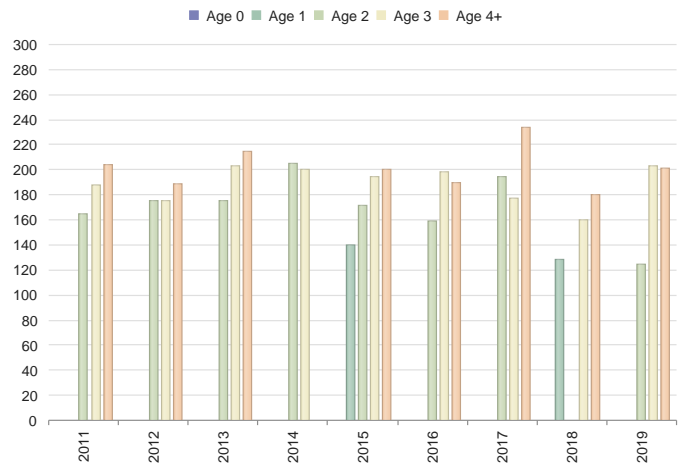
Comments

B&C Score by Age



Comments

Buck Live Weights



Comments

