

DMAP Reports - Caney Creek WMA - 2020

NRIS ID 6564 DMAP ID 6212

BIOLOGIST joshm COUNTY Scott County, MS

ACRES 28437 YEARS ON DMAP 30 SOIL REGION Black Prairie

Introductory Comments

Harvest Summary

	Recommended Harvest	Number Harvested	Acres/Deer Harvested	% Data Collected
Bucks	0 - 0	52	546	88
Does	0 - 0	20	1421	95
Totals		72	394	90

Harvest History

	Region Avg	2020	2019	2018	2017	2016	2015	2014	2013	2012	2011	2010	2009	
Acres	137489	23866	28437	28437	28437	28437	28437	28437	28437	28437	28437	28437	28437	
Total Deer	735.4	110	72	58	49	23	69	60	85	81	100	123	81	130
Bucks	316.0	63	52	43	42	19	30	31	48	43	35	64	33	65
Does	419.4	47	20	15	7	4	39	29	37	38	65	59	48	65
Acres/Deer	186	215	394	490	580	1236	412	473	334	351	284	231	351	218
Bucks	435	377	546	661	677	1496	947	917	592	661	812	444	861	437
Does	327	502	1421	1895	4062	7109	729	980	768	748	437	481	592	437

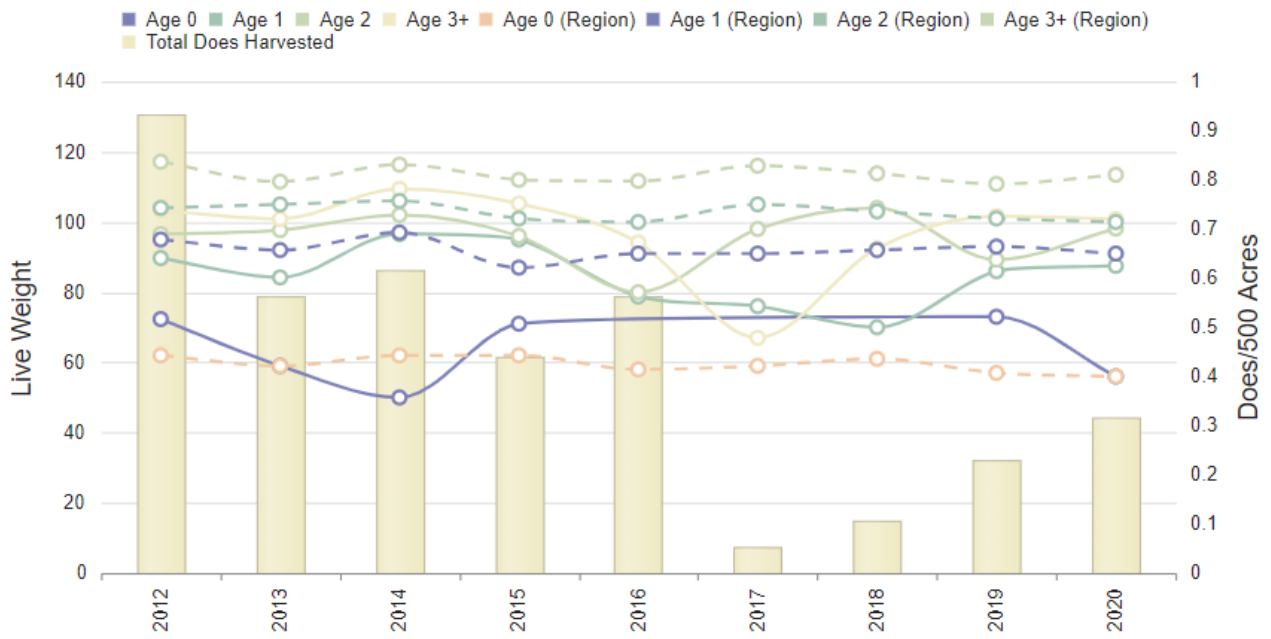
Doe Harvest History

	Region Avg	2020	2019	2018	2017	2016	2015	2014	2013	2012	2011	2010	2009	2008	2007	
Does	419.4	49.1	20	15	7	4	39	29	37	38	65	59	48	65	40	45
Acres/Doe	342.4	902.6	1421	1895	4062	7109	729	980	768	748	437	481	592	437	710	631
% .5 Does	6.6	10.5	5	13	N/A	N/A	N/A	13	2	10	9	1	10	N/A	2	2
# .5 Does	28.2	5.9	1	2	0	0	0	4	1	4	6	1	5	0	1	1
Avg Weight	58.2	56.6	56	73	N/A	N/A	N/A	71	50	59	72	65	62	N/A	55	55
% 1.5 Does	18.2	22.2	20	20	28	25	20	6	27	26	21	23	27	23	17	24
# 1.5 Does	79.4	11.1	4	3	2	1	8	2	10	10	14	14	13	15	7	11
Avg Weight	91.6	85.1	87	86	70	76	78	95	96	84	89	85	85	87	92	85
% 2.5 Does	25.6	24.7	40	26	28	25	28	24	24	15	23	16	22	23	10	35
# 2.5 Does	108.2	11.7	8	4	2	1	11	7	9	6	15	10	11	15	4	16
Avg Weight	101.8	94.5	98	89	104	98	80	96	102	97	96	94	99	94	101	101
% 3.5+ Does	45.8	40.0	30	40	28	25	33	55	43	42	36	52	39	47	70	37
# 3.5+ Does	194.6	20.7	6	6	2	1	13	16	16	16	24	31	19	31	28	17
Avg Weight	110.4	98.4	100	101	92	67	94	104	108	100	102	100	105	103	103	93
% Lactation	N/A	-														
1.5	12.4	14.1	0	0	0	0	0	0	10	0	7	0	0	20	14	0
2.5	53.4	57.1	62	50	100	0	36	0	33	66	40	60	27	66	50	50
2.5+	60.2	54.9	64	30	75	0	37	17	32	68	41	56	50	54	46	48
3.5+	64.0	54.8	66	16	50	0	38	25	31	68	41	54	63	48	46	47

DOE WEIGHTS WITH HARVEST



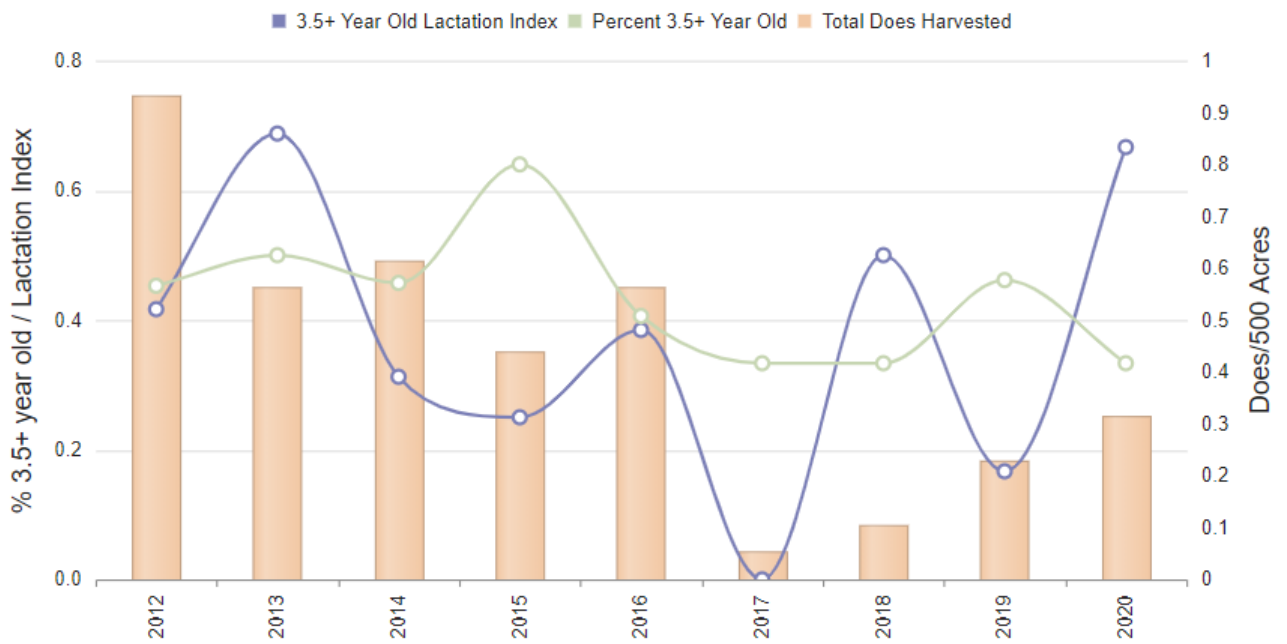
Click series in legend to toggle visibility.



DOE AGE STRUCTURE IN RELATION TO HARVEST AND LACTATION RATES



Click series in legend to toggle visibility.

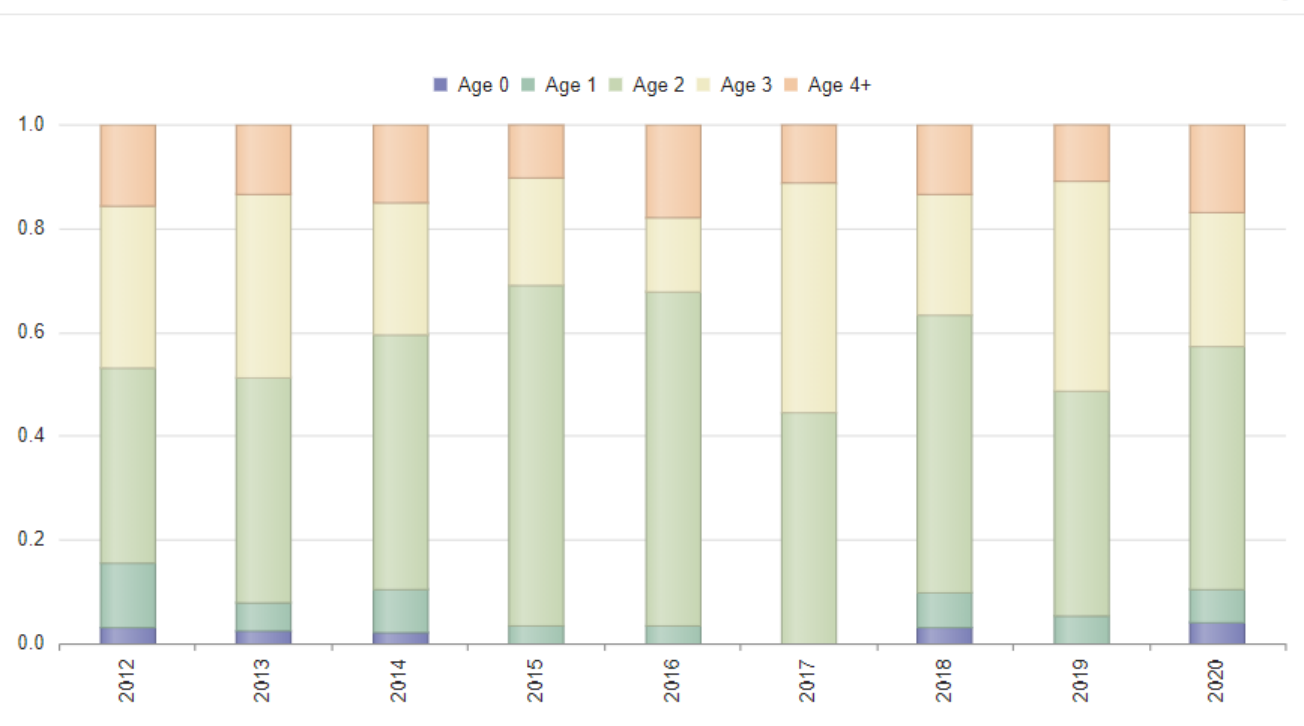


Buck Harvest History

	Region Avg	2020	2019	2018	2017	2016	2015	2014	2013	2012	2011	2010	2009	2008	2007	
Bucks	316.0	67.8	52	43	42	19	30	31	48	43	35	64	33	65	43	57
Acres/Buck	439.0	531.0	546	661	677	1496	947	917	592	661	812	444	861	437	661	498
% .5 Bucks	3.2	4.2	3	N/A	2	N/A	N/A	N/A	2	2	2	3	N/A	N/A	N/A	N/A
# .5 Bucks	11.8	4.2	2	0	1	0	0	0	1	1	1	2	0	0	0	0
Avg Weight	60.6	57.9	63	N/A	57	N/A	N/A	N/A	65	70	55	52	N/A	N/A	N/A	N/A
% 1.5 Bucks	7.2	23.7	5	4	4	N/A	3	3	8	4	11	7	9	16	4	7
# 1.5 Bucks	24.0	23.0	3	2	2	0	1	1	4	2	4	5	3	11	2	4
% Spikes	54.8	44.6	0	50	0	N/A	0	0	75	50	50	20	66	54	0	75
Avg Weight	112.0	107.3	96	96	102	N/A	110	135	92	118	113	103	101	101	123	104
Avg Points	3.2	3.8	3.7	3.0	4.0	N/A	6.0	6.0	2.3	3.0	4.5	4.0	3.3	3.0	5.0	2.3
Avg Base	1.9	2.0	1.8	0.9	1.6	N/A	2.8	2.8	0.6	2.9	2.1	2.3	2.1	0.9	0.0	1.9
Avg Length	5.8	6.7	6.4	3.4	7.4	N/A	10.5	15.4	1.9	7.9	7.8	7.7	5.6	4.1	0.0	4.3
Avg Spread	5.8	5.2	5.6	4.0	7.3	N/A	9.5	0.0	1.4	6.0	6.8	6.2	6.0	5.2	0.0	4.4
% 2.5 Bucks	22.8	33.7	42	37	38	42	60	61	47	37	34	39	27	27	23	17
# 2.5 Bucks	73.4	21.1	22	16	16	8	18	19	23	16	12	25	9	18	10	10
Avg Weight	136.6	133.9	129	134	138	129	128	132	134	142	141	134	147	138	133	136
Avg Points	7.0	6.7	6.8	7.2	7.4	6.5	7.3	6.5	7.1	6.8	7.6	7.0	6.4	6.9	7.4	6.4
Avg Base	3.4	3.2	3.4	3.4	3.3	3.0	3.4	3.2	3.2	3.1	3.1	3.3	3.7	3.5	3.0	3.3
Avg Length	14.9	13.4	14.5	14.3	15.8	15.1	14.8	14.9	14.7	13.6	14.9	14.3	15.6	14.6	12.6	15.6
Avg Spread	12.4	10.6	11.7	11.1	12.5	13.0	12.2	12.1	12.2	12.2	11.6	10.8	12.0	11.6	10.8	11.6
% 3.5 Bucks	28.8	24.0	23	34	16	42	13	19	25	30	28	32	48	29	51	47
# 3.5 Bucks	92.4	14.1	12	15	7	8	4	6	12	13	10	21	16	19	22	27
Avg Weight	157.8	150.3	156	151	156	141	134	164	159	151	158	145	141	144	151	143
Avg Points	8.0	7.7	7.9	7.5	9.1	7.3	8.0	8.2	8.4	8.5	7.9	7.6	7.3	7.6	7.7	7.9
Avg Base	3.9	3.7	4.1	3.5	4.0	3.7	2.7	3.3	3.9	3.4	3.9	3.6	3.9	3.9	3.7	3.8
Avg Length	16.8	16.1	16.7	15.9	18.0	16.3	15.7	18.4	16.6	17.1	16.9	15.2	16.2	15.9	15.3	16.0
Avg Spread	13.6	12.6	13.7	13.3	12.9	12.7	12.6	15.5	12.9	13.7	13.0	12.5	13.2	12.8	12.9	12.6
% 4.5+ Bucks	30.2	11.1	15	9	9	10	16	9	14	11	14	7	15	21	20	28
# 4.5+ Bucks	98.4	6.3	8	4	4	2	5	3	7	5	5	5	5	14	9	16
Avg Weight	176.4	156.4	160	167	118	172	146	143	169	153	163	153	150	167	156	147
Avg Points	9.0	7.9	7.6	8.5	8.5	9.0	9.0	7.3	9.0	8.4	8.0	8.0	7.6	8.8	7.6	8.3
Avg Base	4.2	4.3	4.5	4.9	4.4	4.4	4.1	3.4	4.3	4.4	4.6	4.9	4.2	4.4	4.2	4.2
Avg Length	18.5	18.2	17.9	21.5	20.4	20.3	18.6	17.9	18.3	18.9	19.0	19.9	16.4	19.0	17.6	18.0
Avg Spread	14.9	14.1	15.3	15.4	17.2	16.5	14.9	14.1	14.0	15.2	15.4	16.6	13.1	15.2	12.8	14.0

Comments

% BUCKS BY AGE CLASS



Click series in legend to toggle visibility.

■ Age 0 ■ Age 1 ■ Age 2 ■ Age 3 ■ Age 4+

