



# Calling Panther Lake 2022

## REEL FACTS

Ryan Jones – Fisheries Biologist

[Ryan.Jones@wfp.ms.gov](mailto:Ryan.Jones@wfp.ms.gov) (601) 859-3421

**General Information:** Calling Panther Lake is a 404 acre state fishing lake that was built in 2003 and opened in 2006. This lake offers a unique fishing experience with dense stands of submerged timber and deep creek channels.

**Location:** Approximately 5 miles west of Crystal Springs

**Fishery Management:** Largemouth Bass, bream, crappie, and catfish.

**Purchase a Fishing License:** [https://www.ms.gov/mdwfp/hunting\\_fishing/](https://www.ms.gov/mdwfp/hunting_fishing/)

**Lake Depth Map:** <http://www.mdwfp.com/media/5443/calling-panther-lake.pdf>

### Amenities

- 1 public ramp, parking lot, public restroom with showers, and a nature trail
- 1 handicapped fishing pier
- 23 camping pads with water, electrical, and sewer

### Creel and Size Limits

- Bream: 100 per day
- Catfish: 10 per day
- Crappie: 30 per day
- Largemouth Bass: 1 over 20 inches and 10 per day

### Forage Species

- Threadfin Shad
- Crawfish

### Regulations

- Rod and reel or pole fishing is allowed. No trotlines, FFFD's, jugs, yo-yo's, limblines, throwlines, or set hooks are allowed.
- Sport fishing licenses and fishing permits are required except on designated days during National Fishing and Boating Week.
- Skiing is allowed on Wednesday, Sunday, Memorial Day, July 4<sup>th</sup>, and Labor Day from noon to sunset within ski area.
- Lake is designated as No Wake all other times.

### Fishing Tips

#### Bream

- Try crickets and worms in shallow areas during late spring and summer. Redear Sunfish are often caught by tightlining.

#### Catfish

- Try liver, worms, or blood scented bait along the dam and southwest bank. Night fishing is typically good.

#### Crappie

- Try minnows or jigs around vegetation in the spring. Fishing the creek channel is popular at other times of the year.

#### Largemouth Bass

- Target shallow flats during the spring with soft plastics. Drop offs, ledges, and creek channels are good areas during the summer. Watch for schooling activity as well.

**Below:** Historic lake record fish for Calling Panther Lake. Anglers that catch a fish they believe to be a lake record must have the fish verified by a MDWFP lake manager, lake supervisor, or biologist.

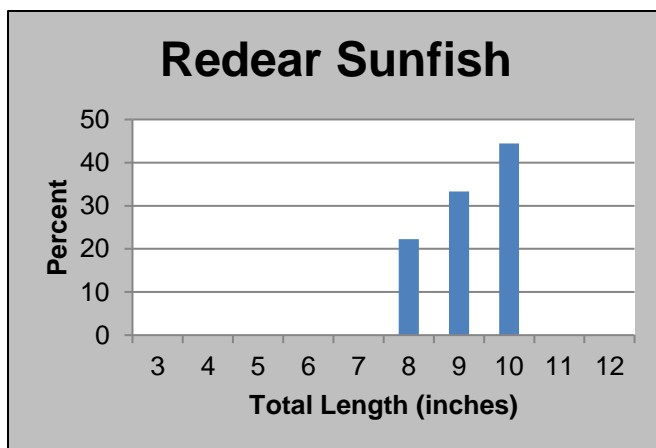
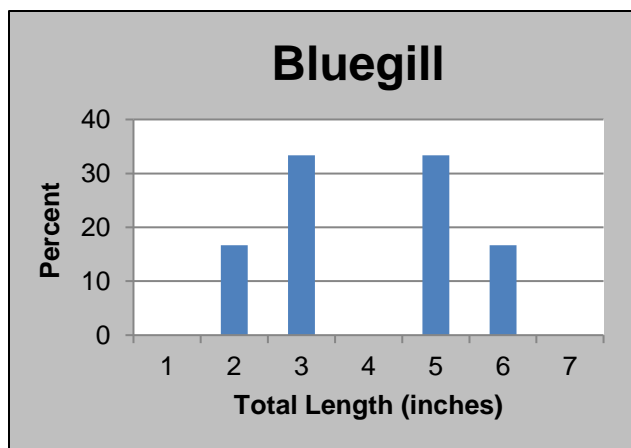
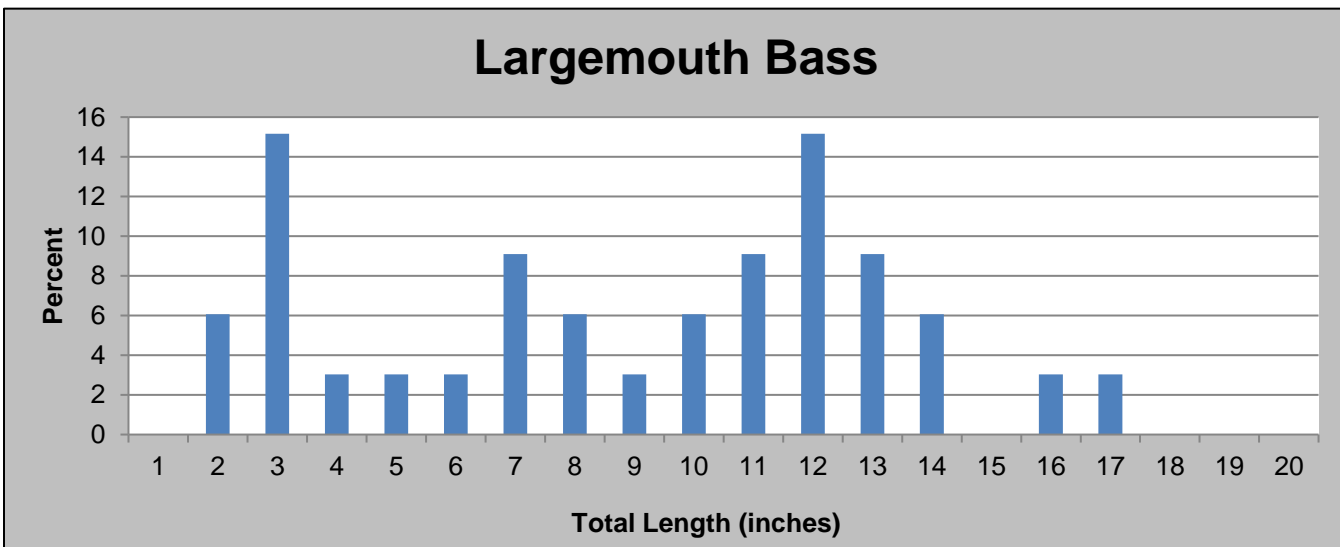
Fish Species	Weight (pounds)	Angler	Date Caught
Largemouth Bass	15.4	James Allen	Feb. 2011
Crappie	2.75	Peggy Blakeney	March 2018
Redear Sunfish	1.65	George Runnells	July 2016
Bluegill	0.5	Jimmy McNabb	May 2019
Catfish	7.64	Earnest Slawson	March 2020



**Below:** Calling Panther Lake is a popular destination for anglers in central Mississippi. The opportunity to catch a trophy size Largemouth Bass, along with it's close proximity to Jackson, make it one of the most popular lakes in the state.

**Below:** Results from the 2021 fall electrofishing survey conducted at Calling Panther Lake.

Species	# of fish collected	% of sample	Average Length (inches)	Maximum Length (inches)	Average Weight (pounds)	Catch Rate – Adult fish (fish/mile)
Largemouth bass	33	46	9.4	17.4	0.9	9
Redear sunfish	9	13	8.6	9.8	0.4	4
Green sunfish	8	11	5.0	7.8	0.3	4
Warmouth	7	10	3.6	5.9	0.0	2
Bluegill	6	8	4.4	6.1	0.1	2
Gizzard shad	4	6	14.7	15.7	1.2	2
Longear sunfish	4	6	3.4	4.4	-	1
Channel catfish	1	1	22.8	22.8	3.9	1



**Above:** Length distributions for Largemouth Bass, Bluegill, and Redear Sunfish collected during 2021 fall electrofishing.

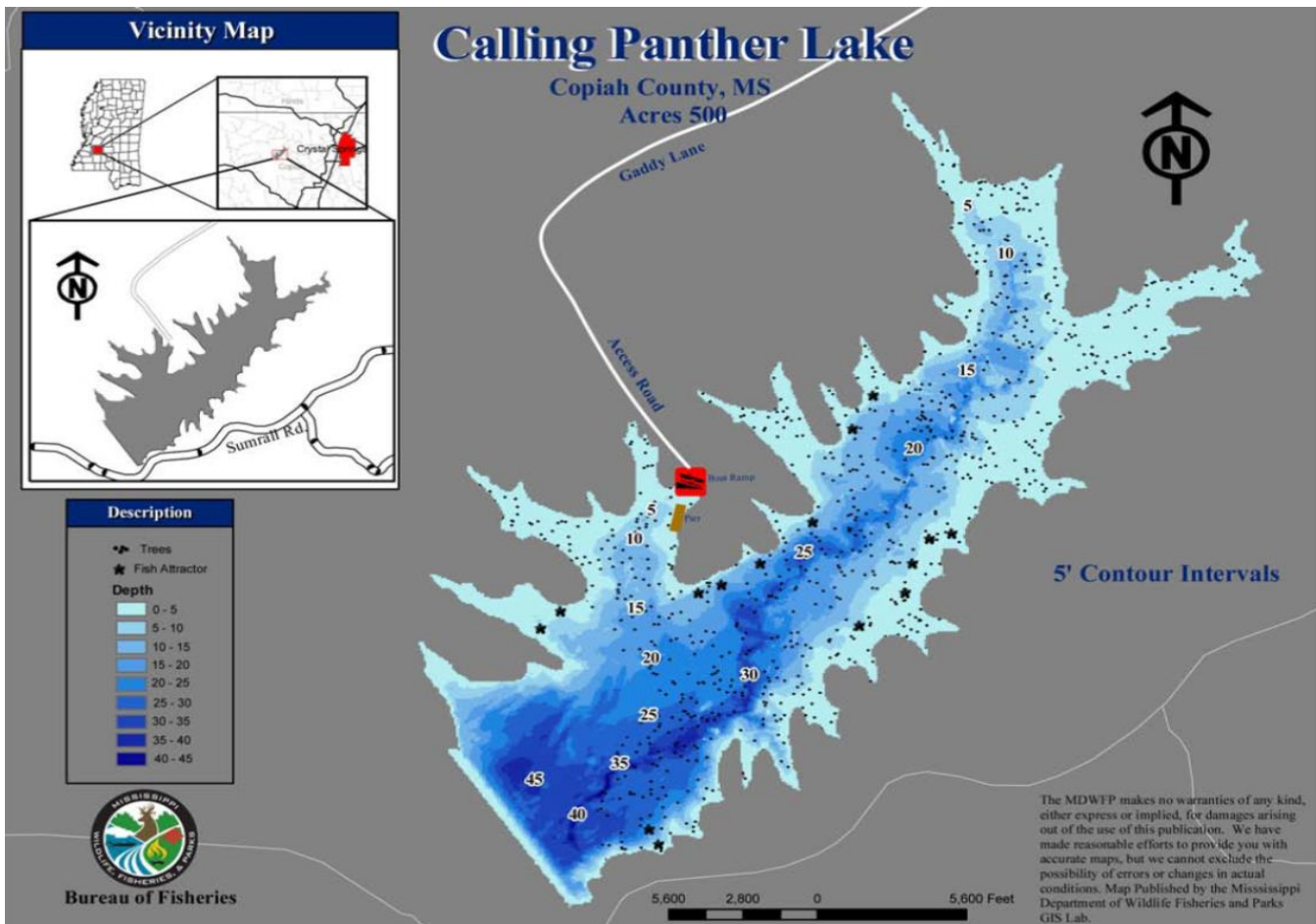


Left: Anglers catch good size crappie throughout the year due great habitat.

Right: Lake Calling Panther habitat is dominated by flooded timber. Anglers typically have more success when keying on depth contour changes such as creek channels and ledges.



**Below:** Depth contour map for Lake Calling Panther



**Left:** A nature trail offers scenic views of the lake and surrounding watershed. The trail can be found off Gaddy Lane on the way to the lake.