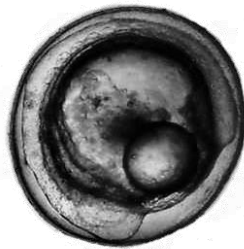


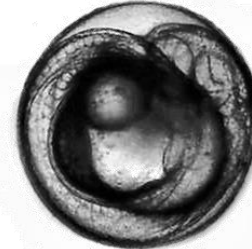
After Fertilization



4 Hours Later

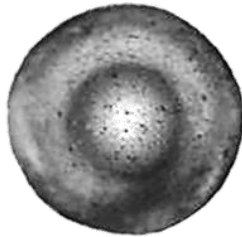


24 Hours Later

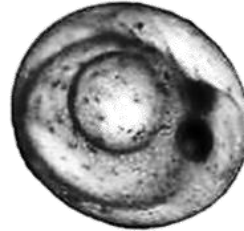


48 Hours Later

White Crappie Eggs
White Crappie spawn when water temps reach 65 degrees F.



Fertilized Egg



11 Days Later – Right Before Hatching

Walleye Eggs
Gulf Coast Walleye spawn when water temps reach 55 degrees F.

