

How do you know you  
have a bite?  
Watch the **bobber**!

*From Top to Bottom on Opposite Page:*

A **ball bobber**'s name reflects its ball-like shape. Anglers fasten the fishing line to the bobber using the hook on top of the bobber and the hook on bottom.

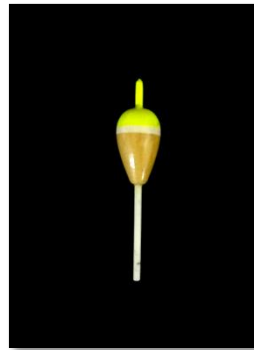
**Pencil bobbers** come in different shapes and sizes. This bobber floats on its side until a fish starts biting. It then "stands up" in the water.

With **slip bobbers** you slip the fishing line through the bobber. You can also slip the line through a cut sometimes found running the full length of the bobber.

### ***Remember!***

**The bobber also helps you know how deep you are fishing.**

If your bobber is lying completely on its side and not bobbing on top the water, your hook and bait are dragging the bottom of the lake or pond. To keep this from happening, adjust the bobber, bringing it closer to the hook.



Pictures and information provided by MDWFP Fisheries personnel. Additional information obtained from the "ABC of Fishing" website (2012).

# Sinkers & Bobbers!



## Fishing Language:

Common Fishing Terms,  
Fishing Gear, and  
Fishing Slang

**NMFH Visitor**

**Education Center**

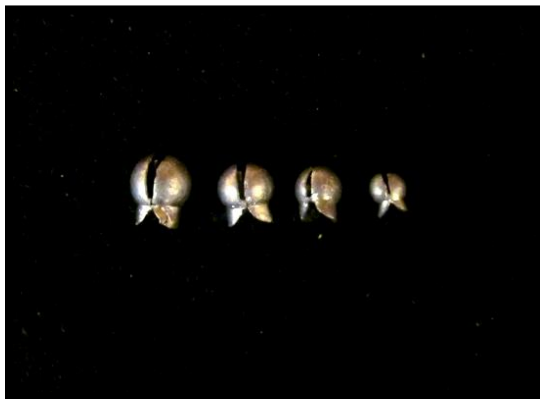
**Phone:** (662) 563-8068

**Web:** [www.mdwfp.com](http://www.mdwfp.com)

**Address:** P.O. Box 100, 457  
CR 36, Enid, MS 38927

A **sinker**, also called a **weight**, takes the bait into different depths of the water. They are usually smooth and round to lessen the chance of getting stuck on logs, rocks, and underwater objects.

**Split Shots** come in many different sizes and are easy to use. Just pinch this weight onto your line!



**Bank sinkers** are tied to the fishing line and used to take the fishing line into deeper water, even if the water current is strong!



**Sliding sinkers** are made to move up and down the line. One is the **egg sinker**. These are used with live bait, particularly night crawlers.



Another sinker is the **slip sinker**. These weights are used to fish on the bottom of a water body for catfish and walleye and are good to use with live bait.



**Casting sinkers** are good for deep water fishing. Also known as bass casting sinkers, they are tied to the fishing line and used with live bait.

