

DMAP Reports - Upper Sardis WMA - 2021

NRIS ID 6998 DMAP ID 9203

BIOLOGIST Holder COUNTY Lafayette County, MS

ACRES 50485 YEARS ON DMAP 31 SOIL REGION Upper Coastal Plain

Introductory Comments

Harvest Summary

| | Recommended Harvest | Number Harvested | Acres/Deer Harvested | % Data Collected |
|--------|---------------------|------------------|----------------------|------------------|
| Bucks | 0 - 0 | 26 | 1941 | 92 |
| Does | 0 - 0 | 16 | 3155 | 100 |
| Totals | | 42 | 1202 | 95 |

Comments

Harvest History

| | Region Avg | 2021 | 2020 | 2019 | 2018 | 2017 | 2016 | 2015 | 2014 | 2013 | 2012 | 2011 | 2010 | 2009 |
|------------|------------|-------|-------|-------|-------|-------|-------|-------|-------|-------|-------|-------|-------|-------|
| Acres | 315871 | 42869 | 50485 | 50485 | 50485 | 43000 | 43000 | 43000 | 43000 | 43000 | 43000 | 43000 | 43000 | 43000 |
| Total Deer | 1864.6 | 71 | 42 | 32 | 57 | 23 | 31 | 49 | 71 | 46 | 88 | 83 | 102 | 105 |
| Bucks | 828.6 | 34 | 26 | 23 | 36 | 22 | 29 | 24 | 28 | 19 | 44 | 47 | 44 | 45 |
| Does | 1036.0 | 36 | 16 | 9 | 21 | 1 | 2 | 25 | 43 | 27 | 44 | 36 | 58 | 60 |
| Acres/Deer | 169 | 602 | 1202 | 1577 | 885 | 1869 | 1387 | 877 | 605 | 934 | 488 | 518 | 421 | 409 |
| Bucks | 381 | 1240 | 1941 | 2195 | 1402 | 1954 | 1482 | 1791 | 1535 | 2263 | 977 | 914 | 977 | 955 |
| Does | 304 | 1169 | 3155 | 5609 | 2404 | 43000 | 21500 | 1720 | 1000 | 1592 | 977 | 1194 | 741 | 716 |

Comments

Doe Harvest History

| | Region Avg | 2021 | 2020 | 2019 | 2018 | 2017 | 2016 | 2015 | 2014 | 2013 | 2012 | 2011 | 2010 | 2009 | 2008 | 2007 |
|-------------|------------|--------|------|------|------|-------|-------|------|------|------|------|------|------|------|------|------|
| Does | 1036.0 | 39.2 | 16 | 9 | 21 | 1 | 2 | 25 | 43 | 27 | 44 | 36 | 58 | 60 | 64 | 74 |
| Acres/Doe | 304.4 | 3723.0 | 3155 | 5609 | 2404 | 43000 | 21500 | 1720 | 1000 | 1592 | 977 | 1194 | 741 | 716 | 671 | 581 |
| % .5 Does | 8.8 | 8.0 | 6 | N/A | 4 | N/A | N/A | 12 | 9 | 7 | 2 | 8 | 8 | 1 | 1 | 6 |
| # .5 Does | 96.8 | 3.4 | 1 | 0 | 1 | 0 | 0 | 3 | 4 | 2 | 1 | 3 | 5 | 1 | 1 | 5 |
| Avg Weight | 59.4 | 58.9 | 0 | N/A | 78 | N/A | N/A | 61 | 64 | 87 | 64 | 55 | 69 | 52 | 77 | 60 |
| % 1.5 Does | 18.0 | 16.7 | 18 | 11 | 9 | N/A | N/A | 8 | 4 | 11 | 22 | 22 | 29 | 20 | 14 | 16 |
| # 1.5 Does | 193.4 | 7.7 | 3 | 1 | 2 | 0 | 0 | 2 | 2 | 3 | 10 | 8 | 17 | 12 | 9 | 12 |
| Avg Weight | 87.2 | 85.8 | 91 | 114 | 80 | N/A | N/A | 77 | 77 | 81 | 77 | 91 | 99 | 89 | 94 | 87 |
| % 2.5 Does | 16.2 | 19.8 | 6 | N/A | N/A | N/A | 50 | 4 | 2 | 3 | 9 | 22 | 24 | 16 | 23 | 22 |
| # 2.5 Does | 172.8 | 8.5 | 1 | 0 | 0 | 0 | 1 | 1 | 1 | 1 | 4 | 8 | 14 | 10 | 15 | 17 |
| Avg Weight | 96.4 | 97.4 | 100 | N/A | N/A | N/A | 96 | 96 | 90 | 107 | 117 | 103 | 113 | 99 | 105 | 97 |
| % 3.5+ Does | 50.8 | 55.0 | 68 | 88 | 76 | 100 | 50 | 72 | 74 | 51 | 59 | 38 | 37 | 58 | 53 | 48 |
| # 3.5+ Does | 531.0 | 20.3 | 11 | 8 | 16 | 1 | 1 | 18 | 32 | 14 | 26 | 14 | 22 | 35 | 34 | 36 |
| Avg Weight | 104.0 | 103.8 | 99 | 105 | 90 | 120 | 100 | 102 | 96 | 99 | 105 | 101 | 124 | 112 | 109 | 105 |
| % Lactation | N/A | - | | | | | | | | | | | | | | |
| 1.5 | 10.2 | 18.0 | 33 | 0 | 0 | N/A | N/A | 0 | 0 | 0 | 0 | 0 | 5 | 8 | 0 | 8 |
| 2.5 | 47.8 | 40.9 | 0 | N/A | N/A | N/A | 0 | 0 | 0 | 0 | 50 | 25 | 35 | 20 | 26 | 23 |
| 2.5+ | 56.4 | 38.1 | 25 | 12 | 18 | 0 | 50 | 21 | 27 | 20 | 36 | 36 | 33 | 40 | 38 | 41 |
| 3.5+ | 59.4 | 42.1 | 27 | 12 | 18 | 0 | 100 | 22 | 28 | 21 | 34 | 42 | 31 | 45 | 44 | 50 |

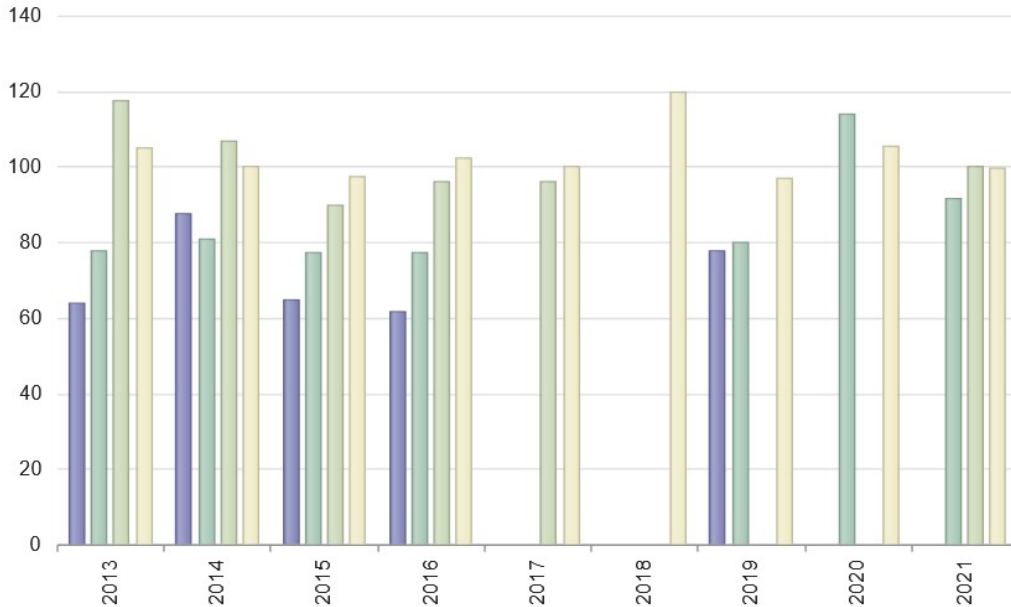
Comments

DOE LIVE WEIGHTS



Click series in legend to toggle visibility.

Age 0 Age 1 Age 2 Age 3+



Buck Harvest History

| | Region Avg | 2021 | 2020 | 2019 | 2018 | 2017 | 2016 | 2015 | 2014 | 2013 | 2012 | 2011 | 2010 | 2009 | 2008 | 2007 | |
|--------------|------------|--------|------|------|------|------|------|------|------|------|------|------|------|------|------|------|------|
| Bucks | 828.6 | 36.9 | 26 | 23 | 36 | 22 | 29 | 24 | 28 | 19 | 44 | 47 | 44 | 45 | 47 | 37 | 49 |
| Acres/Buck | 383.0 | 3030.4 | 1941 | 2195 | 1402 | 1954 | 1482 | 1791 | 1535 | 2263 | 977 | 914 | 977 | 955 | 914 | 1162 | 877 |
| % .5 Bucks | 5.0 | 9.3 | 3 | N/A | 5 | N/A | N/A | 4 | N/A | 5 | 2 | 6 | 4 | 2 | 4 | 5 | |
| # .5 Bucks | 47.0 | 3.0 | 1 | 0 | 2 | 0 | 0 | 1 | 0 | 1 | 1 | 3 | 2 | 1 | 2 | 2 | |
| Avg Weight | 61.0 | 64.0 | 0 | N/A | 0 | N/A | N/A | 64 | N/A | 90 | 58 | 74 | 79 | 60 | 77 | 54 | 88 |
| % 1.5 Bucks | 11.2 | 19.1 | 15 | N/A | 22 | 9 | 3 | 8 | 3 | 10 | 18 | 8 | 13 | 15 | 4 | 8 | 12 |
| # 1.5 Bucks | 97.6 | 8.9 | 4 | 0 | 8 | 2 | 1 | 2 | 1 | 2 | 8 | 4 | 6 | 7 | 2 | 3 | |
| % Spikes | 61.6 | 62.0 | 75 | N/A | 87 | 50 | 100 | 50 | 0 | 50 | 25 | 25 | 33 | 71 | 100 | 100 | 83 |
| Avg Weight | 99.6 | 101.6 | 92 | N/A | 87 | 110 | 96 | 95 | 105 | 117 | 97 | 105 | 114 | 97 | 99 | 88 | 97 |
| Avg Points | 2.7 | 3.6 | 2.5 | N/A | 2.1 | 5.0 | 2.0 | 5.0 | 7.0 | 4.0 | 4.5 | 4.3 | 4.5 | 2.4 | 2.0 | 1.3 | 2.2 |
| Avg Base | 1.8 | 2.0 | 4.3 | N/A | 1.6 | 1.8 | 1.3 | 2.1 | 2.5 | 2.0 | 1.8 | 1.9 | 1.8 | 1.9 | 1.1 | 0.7 | 1.3 |
| Avg Length | 5.1 | 6.9 | 5.6 | N/A | 3.5 | 9.1 | 2.0 | 8.6 | 11.0 | 8.6 | 7.7 | 8.2 | 7.6 | 5.8 | 3.6 | 2.8 | 4.1 |
| Avg Spread | 5.7 | 5.7 | 5.8 | N/A | 5.3 | 7.0 | 3.5 | 5.4 | 10.8 | 8.6 | 7.3 | 5.1 | 6.0 | 4.5 | 2.0 | 1.3 | 2.6 |
| % 2.5 Bucks | 19.8 | 24.9 | 19 | 13 | 11 | 9 | 17 | 16 | N/A | 10 | 36 | 25 | 43 | 20 | 8 | 27 | 18 |
| # 2.5 Bucks | 166.8 | 10.3 | 5 | 3 | 4 | 2 | 5 | 4 | 0 | 2 | 16 | 12 | 19 | 9 | 4 | 10 | |
| Avg Weight | 135.0 | 130.8 | 138 | 133 | 111 | 111 | 140 | 138 | N/A | 135 | 129 | 126 | 145 | 130 | 139 | 129 | 133 |
| Avg Points | 6.4 | 6.4 | 7.2 | 6.7 | 5.5 | 6.5 | 5.8 | 6.5 | N/A | 5.0 | 7.1 | 6.8 | 6.7 | 6.1 | 7.3 | 7.0 | 6.3 |
| Avg Base | 3.2 | 3.0 | 2.5 | 3.3 | 3.0 | 2.9 | 2.5 | 2.1 | N/A | 1.9 | 2.9 | 3.0 | 2.8 | 4.5 | 2.9 | 3.2 | 2.8 |
| Avg Length | 13.8 | 13.5 | 14.5 | 11.9 | 10.9 | 13.2 | 11.5 | 11.7 | N/A | 16.2 | 13.8 | 13.3 | 13.3 | 13.1 | 14.1 | 14.5 | 13.0 |
| Avg Spread | 11.4 | 11.1 | 11.3 | 11.8 | 9.0 | 12.4 | 11.8 | 11.7 | N/A | 11.3 | 11.2 | 9.8 | 10.3 | 12.2 | 10.7 | 10.3 | 11.3 |
| % 3.5 Bucks | 27.0 | 29.9 | 11 | 34 | 22 | 40 | 27 | 33 | 28 | 21 | 22 | 40 | 27 | 42 | 57 | 43 | 38 |
| # 3.5 Bucks | 227.8 | 10.1 | 3 | 8 | 8 | 9 | 8 | 8 | 8 | 4 | 10 | 19 | 12 | 19 | 27 | 16 | 19 |
| Avg Weight | 147.8 | 147.5 | 100 | 152 | 121 | 131 | 144 | 140 | 146 | 153 | 135 | 152 | 157 | 157 | 148 | 149 | 140 |
| Avg Points | 7.3 | 7.4 | 8.0 | 7.8 | 6.6 | 7.0 | 7.1 | 6.4 | 6.6 | 6.8 | 8.0 | 7.0 | 7.4 | 7.1 | 7.0 | 7.8 | 7.7 |
| Avg Base | 3.7 | 3.6 | 3.5 | 3.1 | 2.8 | 2.9 | 3.4 | 3.5 | 3.3 | 4.1 | 3.5 | 3.4 | 3.6 | 3.4 | 3.6 | 3.6 | 3.3 |
| Avg Length | 15.9 | 16.5 | 18.0 | 15.4 | 13.7 | 15.3 | 15.4 | 15.5 | 14.9 | 15.2 | 15.3 | 15.3 | 16.5 | 15.8 | 16.9 | 17.8 | 16.0 |
| Avg Spread | 12.9 | 13.1 | 13.8 | 11.9 | 10.9 | 11.1 | 11.8 | 12.2 | 10.2 | 12.6 | 13.3 | 11.7 | 13.4 | 12.5 | 13.2 | 13.8 | 13.1 |
| % 4.5+ Bucks | 28.6 | 23.4 | 42 | 52 | 33 | 36 | 48 | 33 | 53 | 36 | 18 | 14 | 11 | 20 | 25 | 16 | 24 |
| # 4.5+ Bucks | 242.8 | 7.9 | 11 | 12 | 12 | 8 | 14 | 8 | 15 | 7 | 8 | 7 | 5 | 9 | 12 | 6 | 12 |
| Avg Weight | 160.0 | 156.1 | 149 | 152 | 131 | 141 | 154 | 127 | 139 | 139 | 149 | 162 | 172 | 169 | 160 | 154 | 151 |
| Avg Points | 8.0 | 7.8 | 8.2 | 7.0 | 6.6 | 7.6 | 8.1 | 7.5 | 7.6 | 7.3 | 7.9 | 8.3 | 8.2 | 7.2 | 7.9 | 6.7 | 7.9 |
| Avg Base | 4.2 | 4.1 | 3.5 | 3.7 | 3.5 | 3.8 | 4.0 | 3.3 | 3.3 | 3.2 | 4.4 | 4.7 | 4.5 | 4.2 | 4.3 | 4.3 | 3.7 |
| Avg Length | 18.0 | 17.8 | 16.4 | 16.7 | 16.2 | 17.7 | 18.1 | 14.2 | 16.1 | 13.8 | 18.4 | 15.7 | 18.5 | 17.5 | 19.4 | 18.2 | 17.9 |
| Avg Spread | 14.5 | 14.8 | 13.6 | 13.9 | 12.6 | 14.2 | 15.0 | 11.5 | 13.3 | 12.2 | 14.7 | 15.3 | 14.4 | 12.5 | 14.9 | 16.0 | 14.3 |

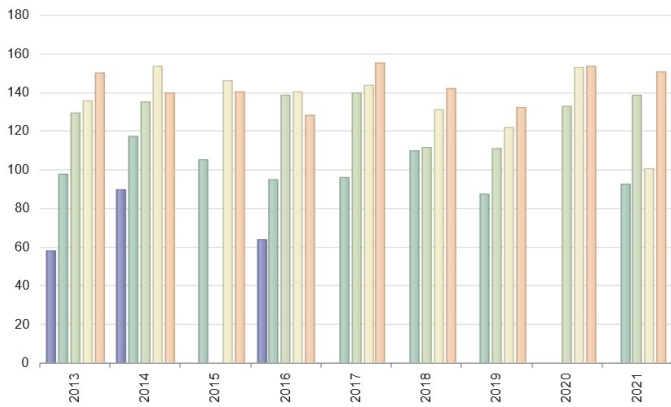
Comments

BUCK LIVE WEIGHTS



Click series in legend to toggle visibility.

Age 0 Age 1 Age 2 Age 3 Age 4+



% BUCKS BY AGE CLASS



Age 0 Age 1 Age 2 Age 3 Age 4+

