

# DMAP Reports - Copiah Co WMA - 2021

NRIS ID 7010 DMAP ID 9501

BIOLOGIST joshm COUNTY Copiah County, MS

ACRES 7386 YEARS ON DMAP 31 SOIL REGION Lower Thin Loess

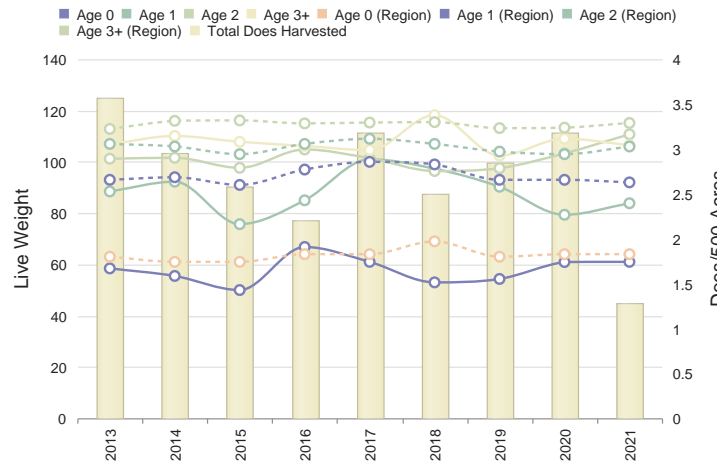
Introductory Comments

Harvest Summary

	Recommended Harvest	Number Harvested	Acres/Deer Harvested	% Data Collected
Bucks	0 - 0	53	139	88
Does	0 - 0	24	307	91
Totals		77	95	89

Comments

Doe Weights with Harvest



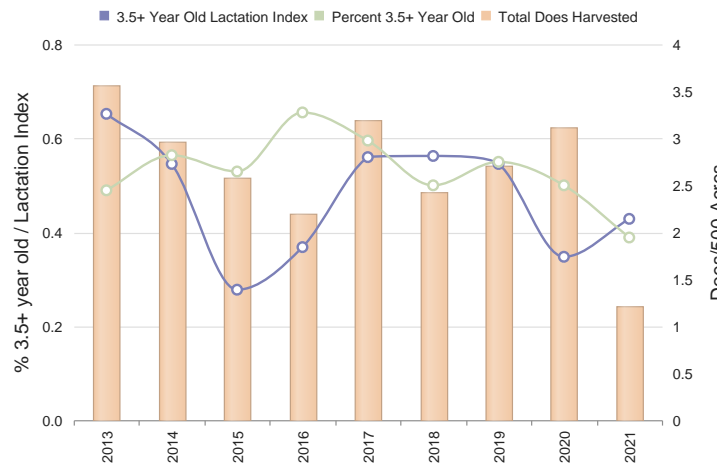
Comments

Harvest History

	Region Avg	2021	2020	2019	2018	2017	2016	2015	2014	2013	2012	2011	2010	2009
Acres	96806	6712	7386	7386	7386	6583	6583	6583	6583	6583	6583	6583	6583	6583
Total Deer	882.0	81	77	120	104	84	112	94	72	107	121	104	144	151
Bucks	331.0	38	53	56	51	44	49	51	34	54	59	56	83	69
Does	551.0	43	24	64	53	40	63	43	38	53	62	48	61	93
Acres/Deer	109	82	95	61	71	78	58	70	91	61	54	63	45	43
Bucks	292	175	139	131	144	149	134	129	193	121	111	117	79	113
Does	175	155	307	115	139	164	104	153	173	124	106	137	107	70

Comments

Doe Age Structure in Relation to Harvest and Lactation Rates



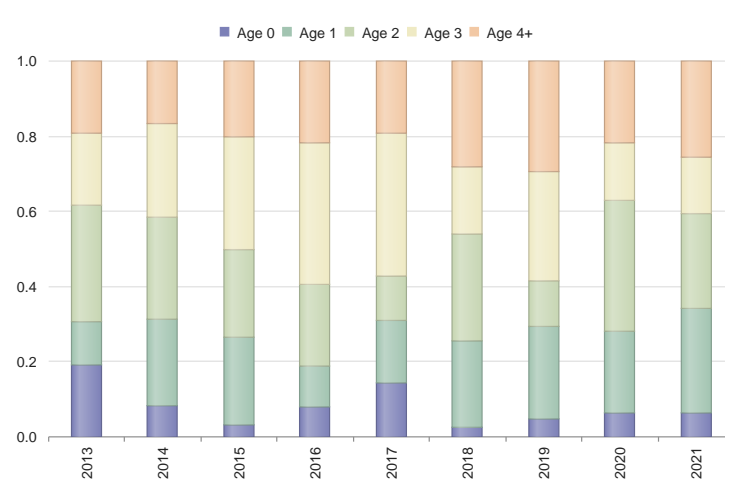
Comments

Buck Harvest History

	Region	Avg	2021	2020	2019	2018	2017	2016	2015	2014	2013	2012	2011	2010	20
Bucks	331.0	42.4	53	56	51	44	49	51	34	54	59	56	83	58	
Acres/Buck	295.4	401.2	139	131	144	149	134	129	193	121	111	117	79	113	
% .5 Bucks	3.2	11.5	5	5	3	2	12	5	2	7	16	1	8	6	
# .5 Bucks	12.6	4.9	3	3	2	1	6	3	1	4	10	1	7	4	
Avg Weight	63.6	55.6	56	61	48	38	59	53	125	61	62	60	55	50	
% 1.5 Bucks	11.6	20.8	24	17	19	20	14	7	20	20	10	42	26	15	
# 1.5 Bucks	40.4	9.3	13	10	10	9	7	4	7	11	6	24	22	9	
% Spikes	57.6	67.0	76	50	40	66	71	100	71	72	50	75	81	66	
Avg Weight	111.2	104.3	97	104	110	118	101	98	98	96	109	109	102	99	
Avg Points	2.9	2.7	2.6	2.5	3.2	2.3	2.0	2.0	2.6	2.1	3.5	2.3	2.3	3.3	
Avg Base	1.7	1.5	1.6	2.2	1.0	1.7	0.9	1.5	2.1	0.8	1.5	1.2	1.0	1.8	
Avg Length	5.2	4.6	3.3	5.8	3.2	7.5	3.2	2.6	3.8	3.2	6.4	3.7	3.3	6.1	
Avg Spread	4.9	3.9	5.3	5.3	2.7	7.2	2.3	3.7	4.5	3.1	5.0	3.3	2.9	5.8	
% 2.5 Bucks	13.0	25.0	22	28	9	25	10	15	20	24	27	21	20	20	
# 2.5 Bucks	45.6	10.7	12	16	5	11	5	8	7	13	16	12	17	12	
Avg Weight	143.6	137.0	125	144	129	152	154	127	130	138	137	143	139	138	
Avg Points	6.4	6.6	6.1	7.3	7.0	7.0	6.8	5.4	6.7	5.8	6.4	6.1	6.1	7.3	
Avg Base	3.2	3.1	3.0	3.5	3.1	3.1	3.7	2.8	2.8	2.8	3.2	3.0	2.9	3.6	
Avg Length	13.8	13.6	11.3	15.2	14.3	15.2	13.7	13.3	13.5	12.8	13.5	14.7	13.7	16.8	1
Avg Spread	11.3	10.9	11.1	12.3	11.4	11.8	10.5	10.6	11.8	10.5	10.7	11.9	11.1	13.0	1
% 3.5 Bucks	22.6	22.5	13	12	23	15	32	27	26	22	16	10	25	22	
# 3.5 Bucks	74.8	8.6	7	7	12	7	16	14	9	12	10	6	21	13	
Avg Weight	161.0	155.6	146	167	150	173	155	143	152	162	160	155	147	146	
Avg Points	7.4	7.6	8.0	7.4	7.0	7.7	7.9	7.7	8.6	7.3	7.3	7.3	7.7	7.8	
Avg Base	3.8	3.7	3.4	3.9	3.8	3.6	4.0	4.4	3.7	3.8	3.9	3.7	3.6	3.7	
Avg Length	16.3	16.8	16.2	17.1	16.5	17.9	16.3	17.6	17.1	16.3	17.6	17.0	16.6	15.5	1
Avg Spread	13.0	13.2	12.1	13.6	13.2	14.3	12.8	13.8	13.3	12.2	14.2	14.9	13.6	13.4	1
% 4.5+ Bucks	37.4	14.8	22	17	23	25	16	15	17	14	16	7	8	18	
# 4.5+ Bucks	126.4	7.3	12	10	12	11	8	8	6	8	10	4	7	11	
Avg Weight	180.0	171.6	164	171	172	179	174	156	160	175	167	155	170	164	
Avg Points	8.3	7.9	8.3	8.2	8.0	7.2	7.6	7.6	9.5	8.4	8.1	8.0	8.6	8.3	
Avg Base	4.4	4.1	3.8	4.1	4.3	4.1	4.3	4.9	4.2	3.8	4.2	3.6	4.3	4.1	
Avg Length	19.0	18.1	18.2	16.7	18.4	18.0	19.0	18.8	18.9	17.0	18.5	16.8	18.2	18.3	1
Avg Spread	15.1	14.8	14.7	13.6	14.8	14.2	14.8	15.1	14.8	14.0	15.1	14.1	14.7	14.2	1

Comments

% Bucks by Age Class



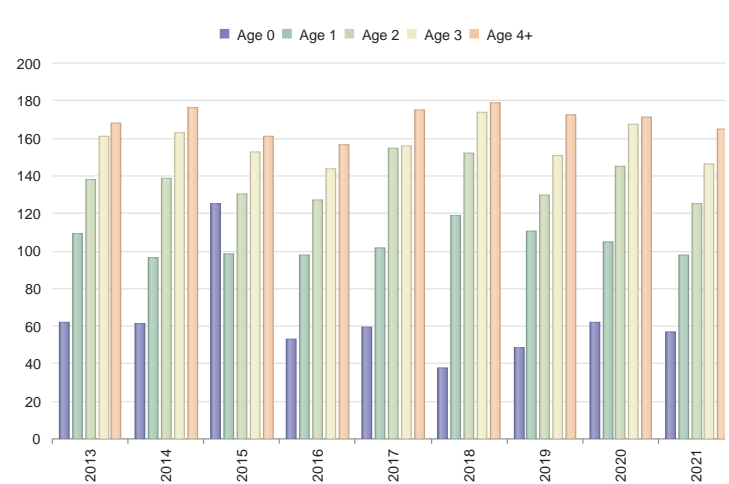
Comments

Does Harvest History

	Region	Avg	2021	2020	2019	2018	2017	2016	2015	2014	2013	2012	2011	2010	20
Does	551.0	46.2	24	64	53	40	63	43	38	53	62	48	61	93	
Acres/Doe	178.0	182.0	307	115	139	164	104	153	173	124	106	137	107	70	1
% .5 Does	6.2	13.9	12	21	13	12	14	11	5	18	14	4	6	10	
# .5 Does	37.2	6.8	3	14	7	5	9	5	2	10	9	2	4	10	
Avg Weight	64.8	53.0	61	60	54	53	61	66	50	55	58	60	52	50	
% 1.5 Does	17.8	20.6	29	17	13	22	12	9	26	20	24	12	24	21	
# 1.5 Does	100.6	9.7	7	11	7	9	8	4	10	11	15	6	15	20	
Avg Weight	95.4	87.0	83	79	90	97	101	85	75	92	88	87	86	79	
% 2.5 Does	17.0	16.6	16	20	24	17	14	13	15	11	14	18	18	13	
# 2.5 Does	97.0	7.6	4	13	13	7	9	6	6	6	9	9	11	13	
Avg Weight	105.8	97.9	110	103	97	96	101	104	97	101	101	114	98	84	
% 3.5+ Does	52.8	43.0	33	35	41	42	39	44	47	41	37	52	45	48	
# 3.5+ Does	293.2	20.4	8	23	22	17	25	19	18	22	23	25	28	45	
Avg Weight	112.8	105.6	106	108	102	117	104	105	107	104	106	108	106	98	1
% Lactation	N/A	-													
1.5	5.0	18.6	0	0	0	22	13	50	0	9	0	0	13	0	
2.5	37.0	56.8	25	46	15	43	67	33	0	17	44	56	36	77	
2.5+	55.0	63.0	36	39	40	52	59	36	21	46	59	56	59	78	
3.5+	61.0	66.9	43	35	55	56	56	37	28	55	65	56	68	78	

Comments

Buck Live Weights



Comments