

DMAP Reports - Hell Creek WMA - 2022

6995 9107
 NathanB Union County, MS
 2344 25 Interior Flatwoods

HARVEST SUMMARY

	Number Harvested	Acres/Deer Harvested	% Data Collected
Bucks	6	390	100
Does	15	156	100
Totals	21	111	100

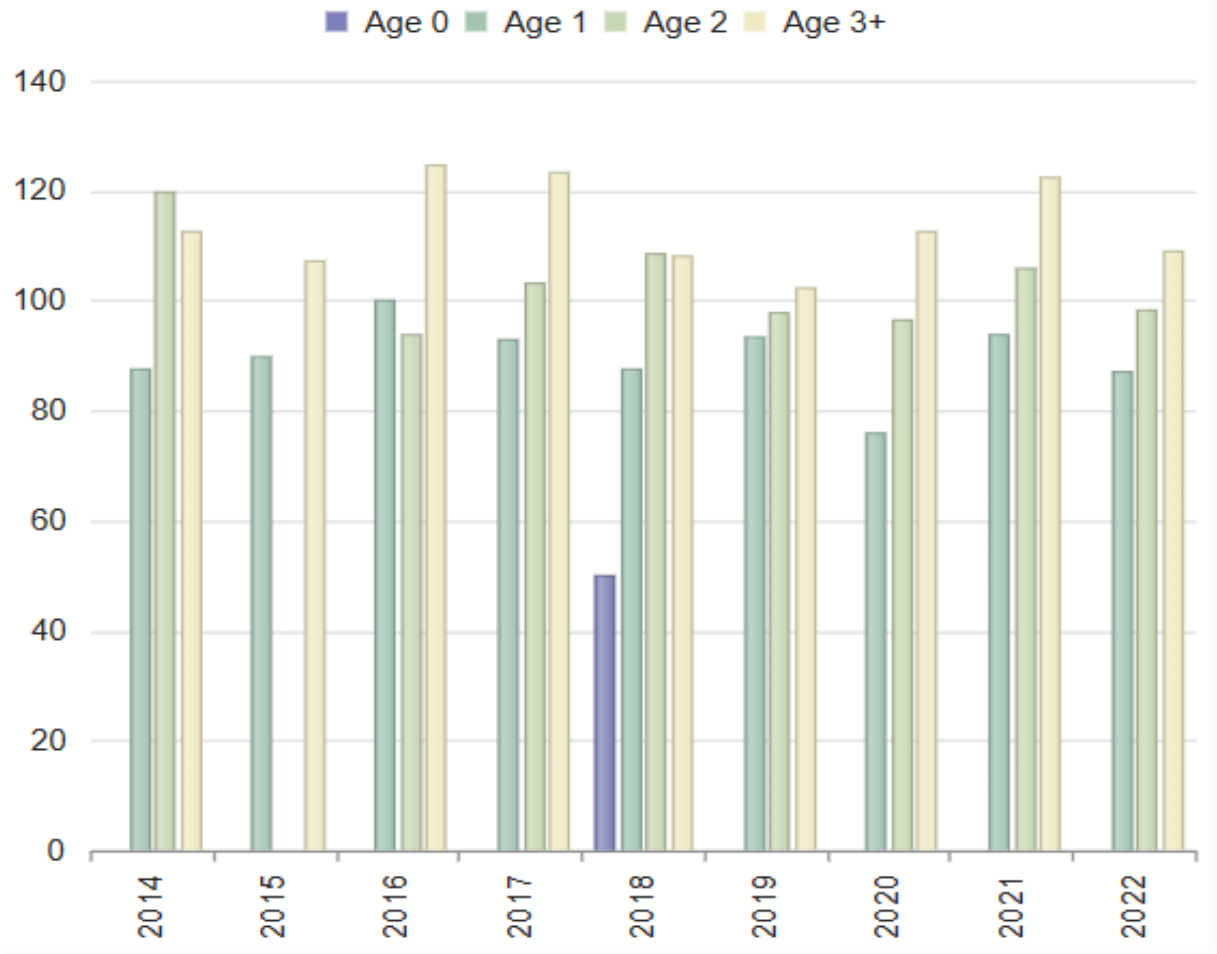
HARVEST HISTORY

	Region	Avg	2022	2021	2020	2019	2018	2017	2016	2015	2014	2013
Acres	35414	2300	2344	2344	2344	2344	2344	2344	2284	2284	2284	2284
Total Deer	261.6	14	21	17	24	26	12	23	5	8	21	11
Bucks	113.4	3	6	5	5	3	2	8	0	1	4	2
Does	148.2	11	15	12	19	23	10	15	5	7	17	9
Acres/Deer	135	154	111	137	97	90	195	101	456	285	108	207
Bucks	312	701	390	468	468	781	1172	293	N/A	2284	571	1142
Does	238	197	156	195	123	101	234	156	456	326	134	253

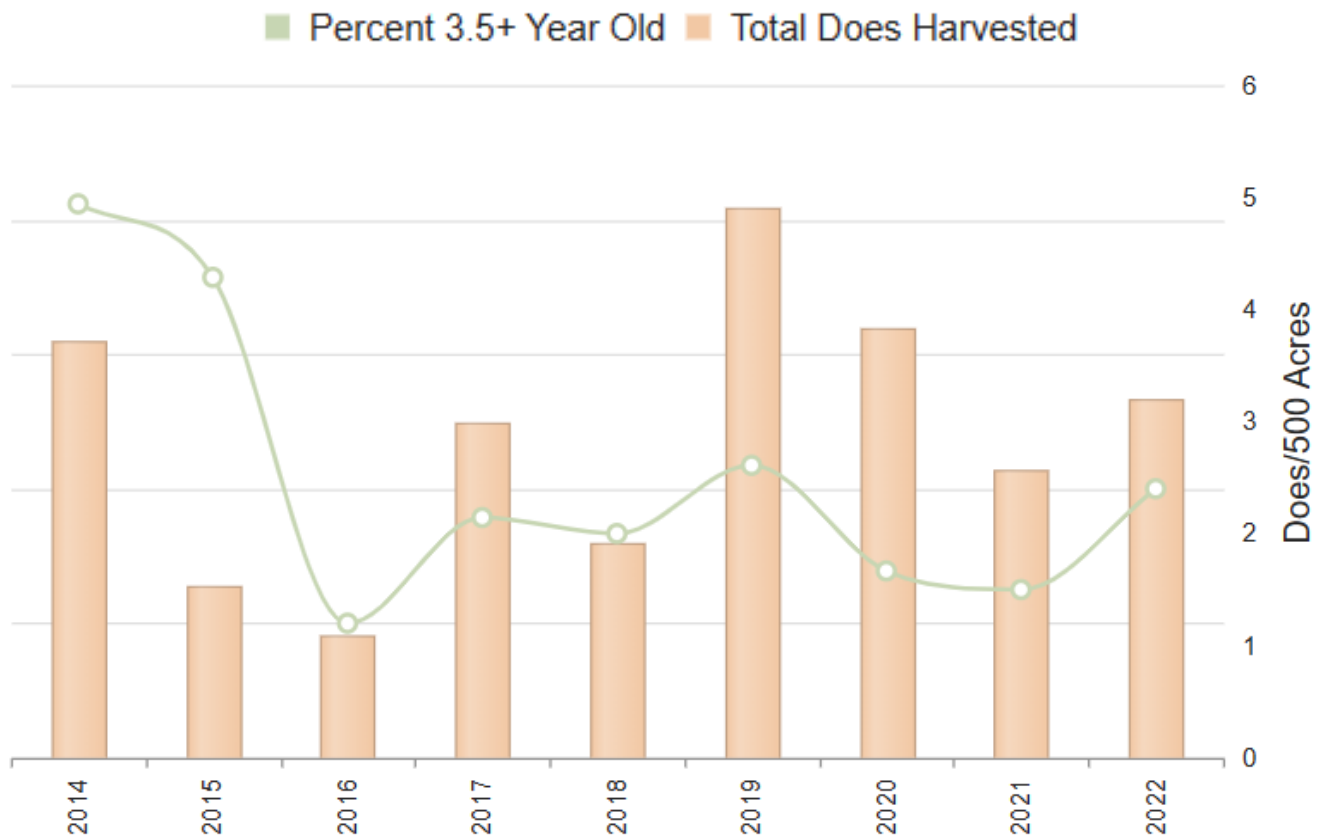
DOE HARVEST HISTORY

	Region	Avg	2022	2021	2020	2019	2018	2017	2016	2015	2014	2013
Does	148.2	12.1	15	12	19	23	10	15	5	7	17	9
Acres/Doe	243.6	222.0	156	195	123	101	234	156	456	326	134	253
% .5 Does	7.4	12.8	N/A	N/A	N/A	N/A	10	N/A	N/A	N/A	N/A	11
# .5 Does	11.4	1.4	0	0	0	0	1	0	0	0	0	1
Avg Weight	59.2	61.9	N/A	N/A	N/A	N/A	50	N/A	N/A	N/A	N/A	85
% 1.5 Does	20.8	30.7	20	33	31	13	20	33	20	28	11	33
# 1.5 Does	31.4	3.5	3	4	6	3	2	5	1	2	2	3
Avg Weight	89.6	88.3	87	93	76	93	87	93	100	90	87	90
% 2.5 Does	17.0	30.0	40	41	36	43	40	26	60	N/A	5	11
# 2.5 Does	25.8	3.7	6	5	7	10	4	4	3	0	1	1
Avg Weight	100.6	99.9	98	106	96	98	108	103	94	N/A	120	90
% 3.5+ Does	51.6	36.5	40	25	31	43	30	33	20	71	82	44
# 3.5+ Does	77.6	4.7	6	3	6	10	3	5	1	5	14	4
Avg Weight	109.0	110.8	108	122	112	102	108	123	125	106	112	101
% Lactation	N/A	-										
1.5	17.0	35.8	0	25	17	0	50	40	0	50	0	33
2.5	61.0	70.5	83	60	71	40	75	50	33	N/A	100	100
2.5+	62.0	67.5	58	63	50	60	71	33	25	60	80	80
3.5+	62.0	72.6	33	67	20	80	67	20	0	60	79	75

DOE LIVE WEIGHTS



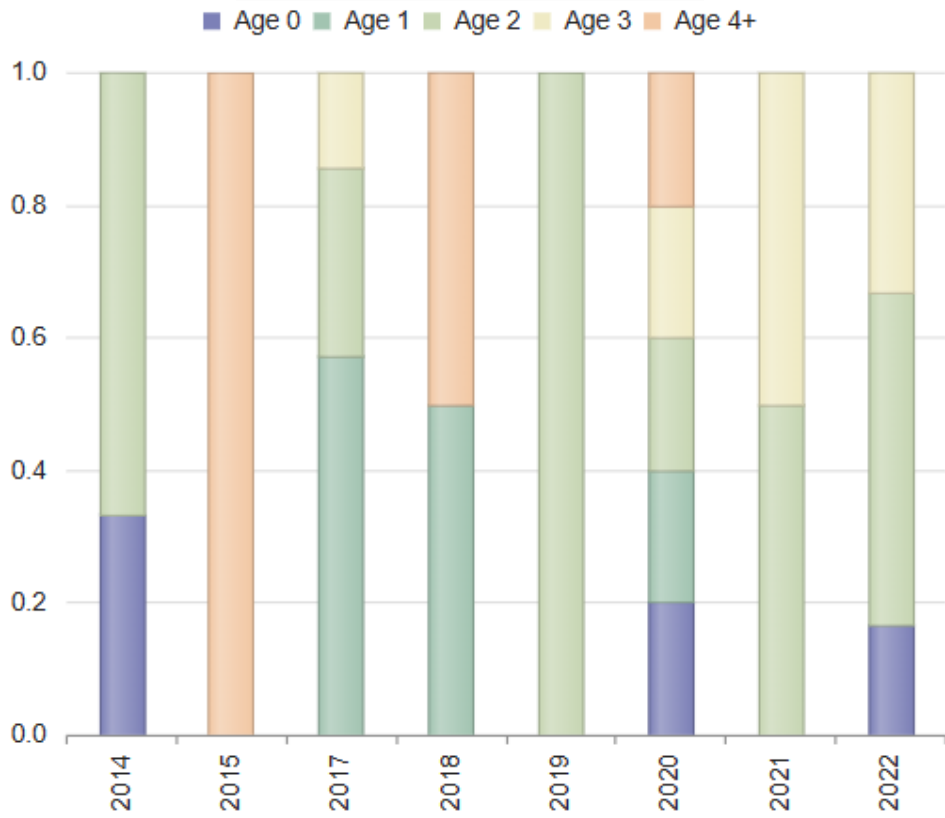
DOE AGE STRUCTURE IN RELATION TO HARVEST



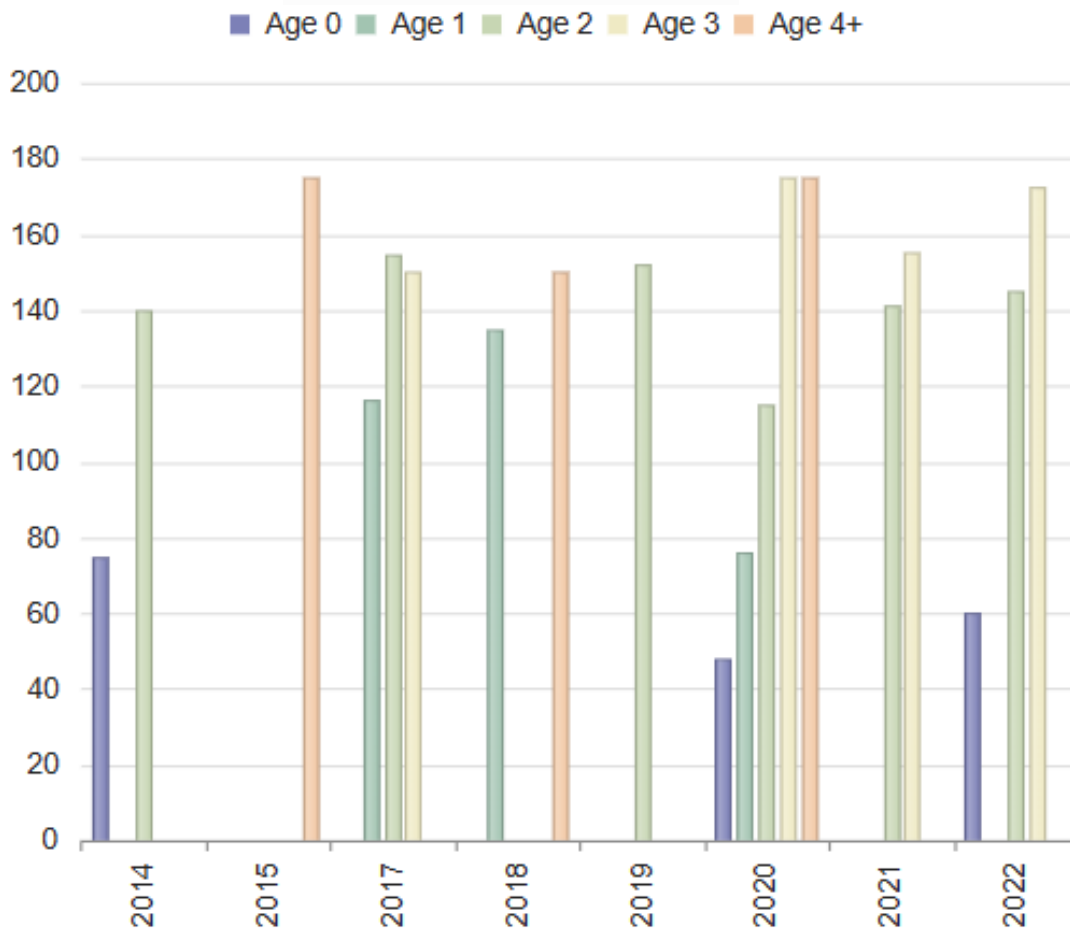
BUCK HARVEST HISTORY

	<i>Region</i>	<i>Avg</i>	2022	2021	2020	2019	2018	2017	2016	2015	2014	2013
Bucks	113.4	3.7	6	5	5	3	2	8	0	1	4	2
Acres/Buck	312.0	850.1	390	468	468	781	1172	293	N/A	2284	571	1142
% .5 Bucks	7.0	42.2	16	N/A	20	N/A	N/A	N/A	N/A	N/A	25	N/A
# .5 Bucks	8.0	1.4	1	0	1	0	0	0	0	0	1	0
Avg Weight	61.4	59.2	60	N/A	48	N/A	N/A	N/A	N/A	N/A	75	N/A
% 1.5 Bucks	12.8	42.1	N/A	N/A	20	N/A	50	50	N/A	N/A	N/A	N/A
# 1.5 Bucks	14.8	1.7	0	0	1	0	1	4	0	0	0	0
% Spikes	65.2	79.0	N/A	N/A	100	N/A	0	50	N/A	N/A	N/A	N/A
Avg Weight	100.8	110.3	N/A	N/A	76	N/A	135	116	N/A	N/A	N/A	N/A
Avg Points	2.5	4.8	N/A	N/A	2.0	N/A	8.0	3.3	N/A	N/A	N/A	N/A
Avg Base	1.9	2.2	N/A	N/A	1.5	N/A	2.5	1.3	N/A	N/A	N/A	N/A
Avg Length	5.3	8.6	N/A	N/A	1.5	N/A	8.9	4.7	N/A	N/A	N/A	N/A
Avg Spread	5.6	6.9	N/A	N/A	3.0	N/A	7.0	3.8	N/A	N/A	N/A	N/A
% 2.5 Bucks	17.2	47.7	50	40	20	100	N/A	25	N/A	N/A	50	N/A
# 2.5 Bucks	20.0	1.9	3	2	1	3	0	2	0	0	2	0
Avg Weight	138.2	139.8	145	141	115	152	N/A	154	N/A	N/A	140	N/A
Avg Points	6.6	7.0	6.0	9.0	6.0	6.7	N/A	7.0	N/A	N/A	8.5	N/A
Avg Base	3.2	3.5	2.5	3.6	3.0	3.3	N/A	3.3	N/A	N/A	3.7	N/A
Avg Length	14.1	16.1	15.0	18.2	15.6	15.7	N/A	15.6	N/A	N/A	16.4	N/A
Avg Spread	11.4	12.5	11.8	13.5	12.0	12.6	N/A	14.0	N/A	N/A	12.8	N/A
% 3.5 Bucks	25.6	31.5	33	40	20	N/A	N/A	12	N/A	N/A	N/A	N/A
# 3.5 Bucks	30.0	1.4	2	2	1	0	0	1	0	0	0	0
Avg Weight	151.0	163.1	172	155	175	N/A	N/A	150	N/A	N/A	N/A	N/A
Avg Points	7.6	8.2	7.0	8.5	8.0	N/A	N/A	6.0	N/A	N/A	N/A	N/A
Avg Base	3.7	4.0	4.3	4.2	3.6	N/A	N/A	4.3	N/A	N/A	N/A	N/A
Avg Length	16.2	19.5	18.9	20.0	20.5	N/A	N/A	19.9	N/A	N/A	N/A	N/A
Avg Spread	12.8	14.7	17.0	14.6	17.8	N/A	N/A	17.0	N/A	N/A	N/A	N/A
% 4.5+ Bucks	30.6	47.5	N/A	N/A	20	N/A	50	N/A	N/A	100	N/A	N/A
# 4.5+ Bucks	35.4	1.0	0	0	1	0	1	0	0	1	0	0
Avg Weight	N/A	163.8	N/A	N/A	175	N/A	150	N/A	N/A	175	N/A	N/A
Avg Points	8.4	8.5	N/A	N/A	6.0	N/A	8.0	N/A	N/A	13.0	N/A	N/A
Avg Base	4.2	4.5	N/A	N/A	4.0	N/A	3.9	N/A	N/A	5.9	N/A	N/A
Avg Length	18.2	19.7	N/A	N/A	18.0	N/A	19.6	N/A	N/A	20.9	N/A	N/A
Avg Spread	14.7	16.5	N/A	N/A	16.5	N/A	15.0	N/A	N/A	16.5	N/A	N/A

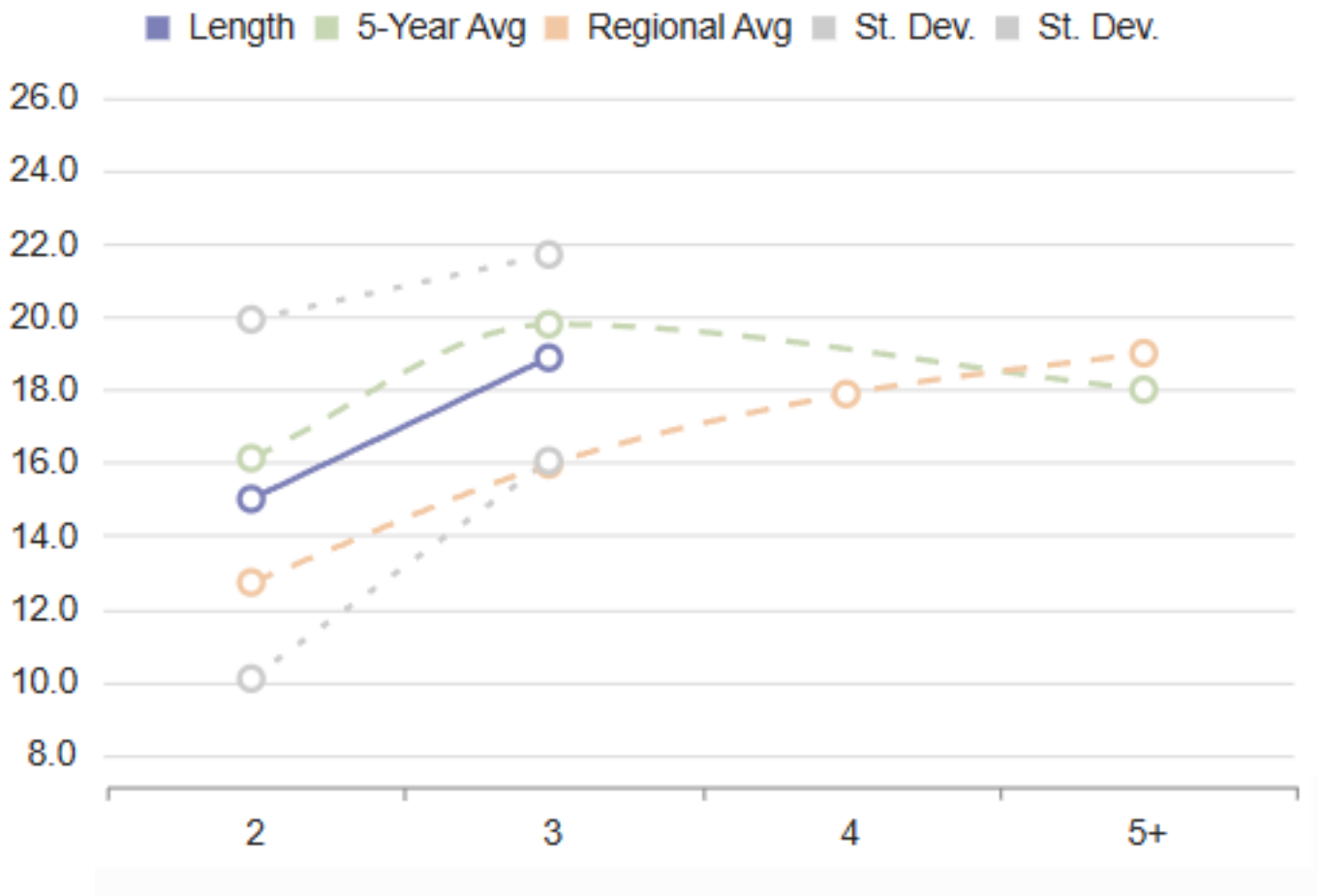
% BUCKS BY AGE CLASS



BUCK LIVE WEIGHTS



MAIN BEAM LENGTHS BY AGE



		Estimated Non-typical B&C Score		
Age	Num	At Harvest	At Maturity (Min)	At Maturity (Max)
2.5	3	77 7/8	108 1/8	126 4/8
3.5	2	116 2/8	133 5/8	148
4.5		0	0	0
5.5+		0	0	0