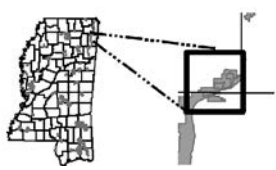


John Bell Williams

Wildlife Management Area



John Bell Williams - 3,198 Acres

Mississippi Department of
Wildlife, Fisheries & Parks

A Tenn-Tom Waterway Wildlife Mitigation Project

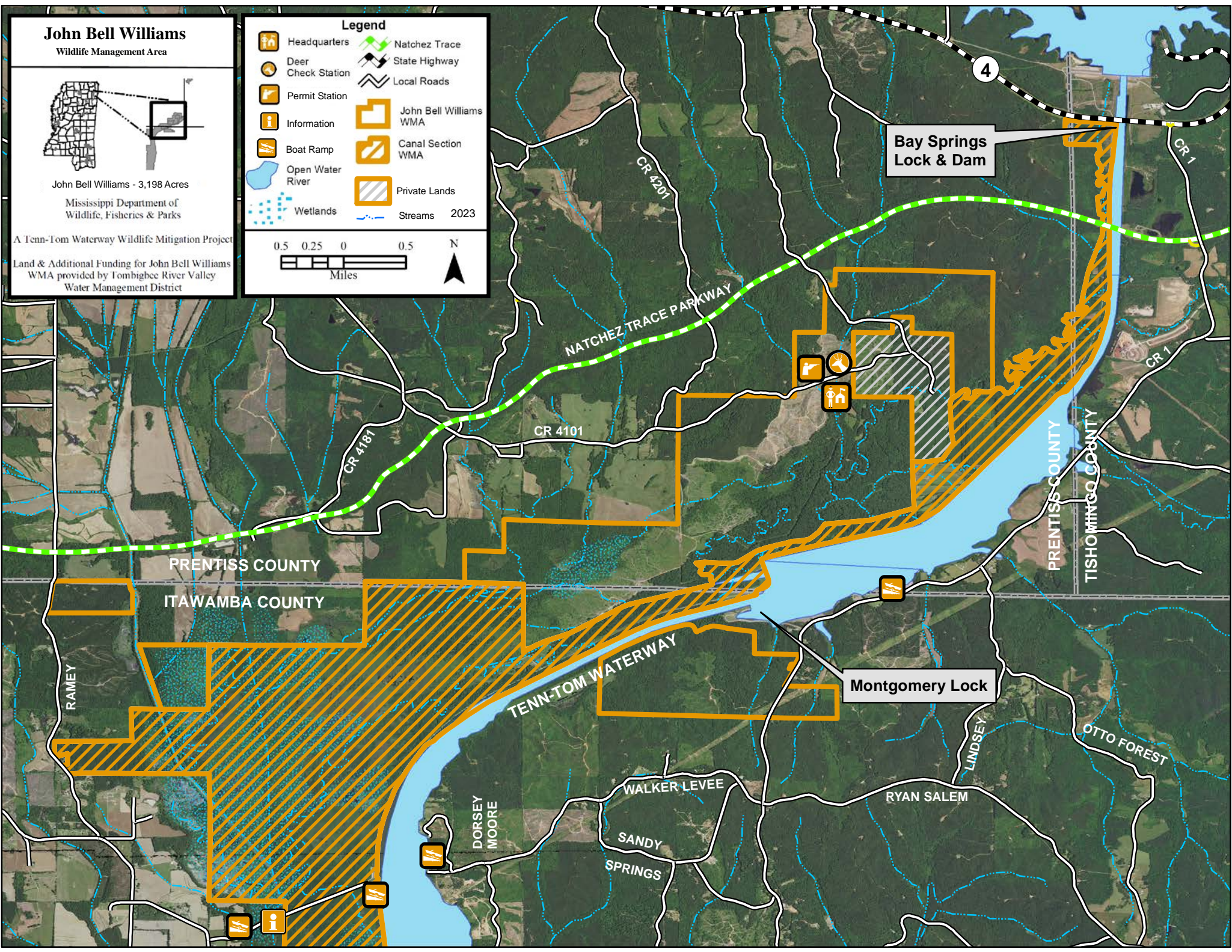
Land & Additional Funding for John Bell Williams
WMA provided by Tombigbee River Valley
Water Management District

Legend

	Headquarters		Natchez Trace
	Deer Check Station		State Highway
	Permit Station		Local Roads
	Information		John Bell Williams WMA
	Boat Ramp		Canal Section WMA
	Open Water River		Private Lands
	Wetlands		Streams 2023

0.5 0.25 0 0.5 Miles

N



Bay Springs Lock & Dam

Montgomery Lock

PRENTISS COUNTY

ITAWAMBA COUNTY

PRENTISS COUNTY

TISHOMINGO COUNTY

TENN-TOM WATERWAY

NATCHEZ TRACE PARKWAY

RYAN SALEM

SANDY SPRINGS

OTTO FOREST

WALKER LEVEE

DORSEY MOORE

LINDSEY

CR 1

CR 1

CR 4101

CR 4181

CR 4201

RAMEY