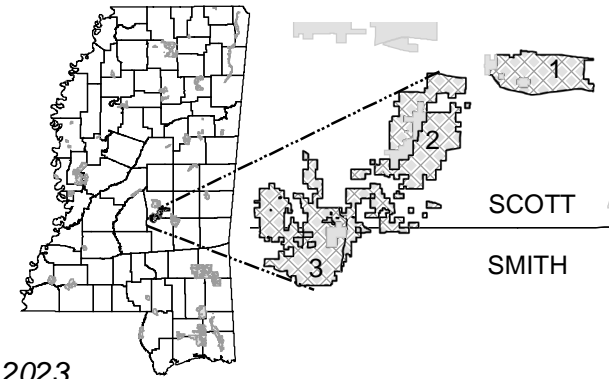


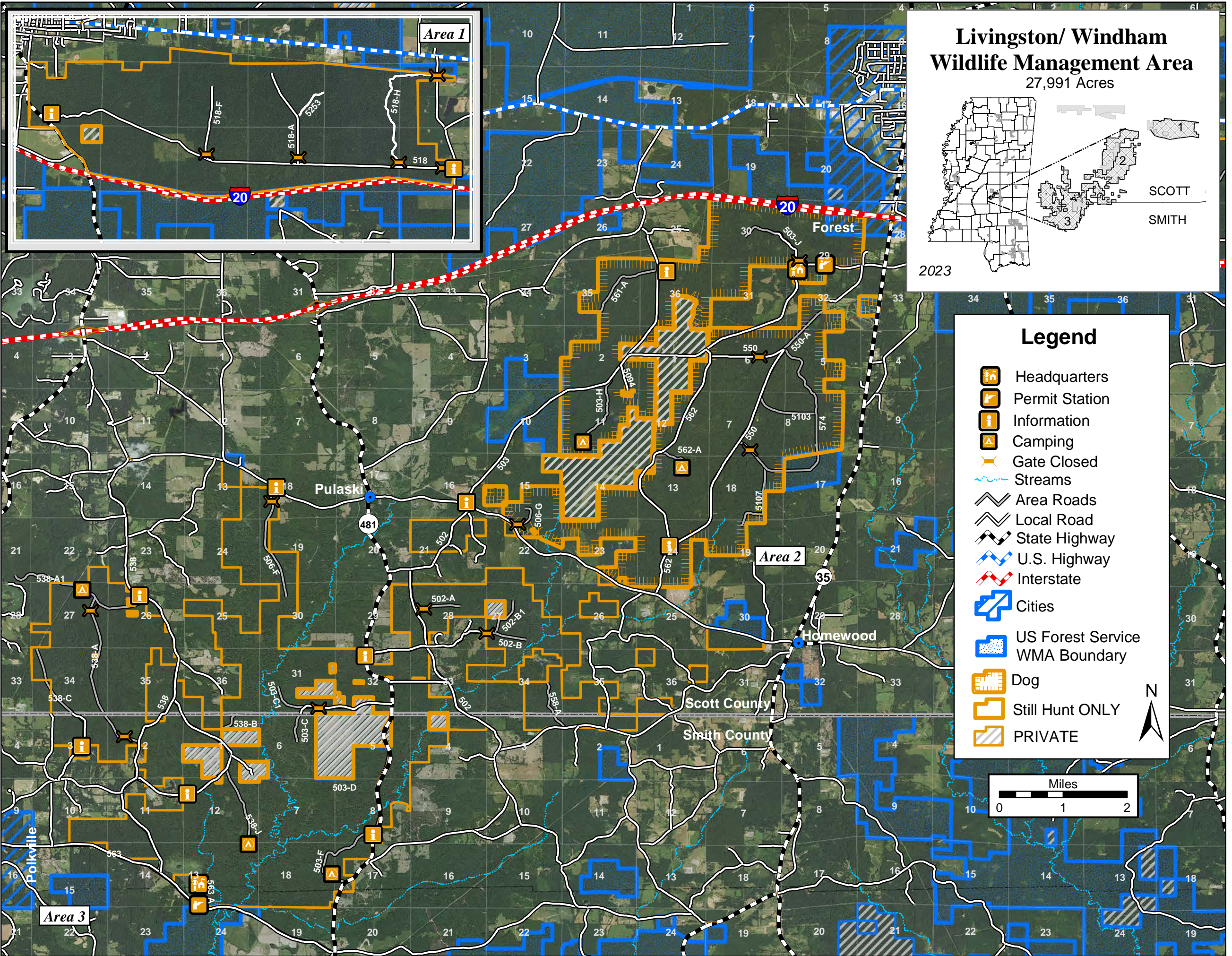
Livingston/ Windham Wildlife Management Area

27,991 Acres



Legend

- Headquarters
- Permit Station
- Information
- Camping
- Gate Closed
- Streams
- Area Roads
- Local Road
- State Highway
- U.S. Highway
- Interstate
- Cities
- US Forest Service WMA Boundary
- Dog
- Still Hunt ONLY
- PRIVATE



Area 1

Area 2

Area 3

Pulaski

Homewood

Forest

Scott County

Smith County

Polkville